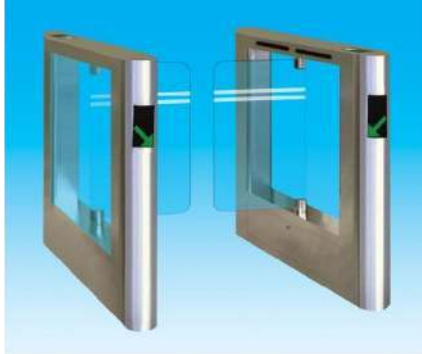


TS-SG-CP1



Swing barrier is an ideal passenger access management device produced by our company after years' research and development. Our standard product, made of 304 stainless steel, integrating with mechanism, electron, microprocessor and various identification technology, is able to achieve access intelligent control and management by configuring all kinds of identification devices, direction indicator and well-extended LED counting display.

TRAFFIC TYPE



MAIN FUNCTIONS

- With function of self-examine and alarm, it is convenient for maintain and use
- Being able to program operation state by the small keyboard in the main board.
- Arm will stop moving when it is blocked, which prevents pedestrians from being nipped or from hurt.
- Arms are automatically locked until opening signal is received
- Arms synchronization (adjustable)
- Light and sound alarm is generated when the illegal invasion and the tail followed.
- Unit can be adjusted to normal open or normal close to meet different conditions.
- Automatically reset function: It will automatically lock if the pedestrian hasn't pass through the channel in the pre-set time after the opening. The passing time is adjustable.



- The arms automatically open when power off and automatically close when power is on, which accords with fire-fighting's requirement.
- It can be directly controlled and managed by remote computer

PRODUCTS OPTIONS

- Counter
- Infrared reset function
- One direction or bi-direction are optional
- Light and voice alarm function, include the illegal in and being nipped
- The length of casework and arms are optional

TECHNICAL PARAMETERS

- Housing material: 304 grade stainless steel (thickness:1.5mm)
- Gate material:Toughened glass
- Dimension:L1400*W180*H1000mm
- Max. passage width:850mm
- Arm's rotation angle: 180degree
- Swing direction: single or bi-direction
- Working voltage: AC220 ±10% V/50 ±10% HZ AC110V±10% 50Hz±10%
- Driving electromotor: DC electromotor 100W/24V
- Transit speed: 40 persons/min(open often), 25-30 persons/min(close often)
- Automatic reset time after fault: 10seconds
- Communication interface: RS485 standard Distance less than 1200metres
- Input interface: Dry contact signal or +12V level signal or DC12V pulse signal with width of more than 100ms , driving current: >10mA
- Working environment: Indoor, outdoor(with a tent over)
- Working temperature: -20℃—— 50℃
- Relative humidity: ≤90% no condensation

