



6 major performance advantages



thermal insulation



low noise



Super wind resistance



Safe and reliable



strong and sturdy



Multifunction

Door panel

- door panel thickness 40mm and 50mm for choice, It is made of one-time compression molding of foaming polyurethane with thermal insulation material. It has the advantages of anti-UV, anti-aging, not easy to crack and not easy to fade. Whether it is cold or cool, it can provide good insulation, heat insulation and sound insulation.



Lift Method

different factory and building top space, door panel have 3 different lifting methods

1 : Standard lifting

55cm top headroom $\geq 550\text{MM}$

2 : High lifting (when door vertical lifting half or some panel door panel just overhead)

top headroom $\geq 1500\text{MM}$

3 : Vertical Lifting

door clear height +600MM



①

Standard sliding door



②

Inclined sliding door



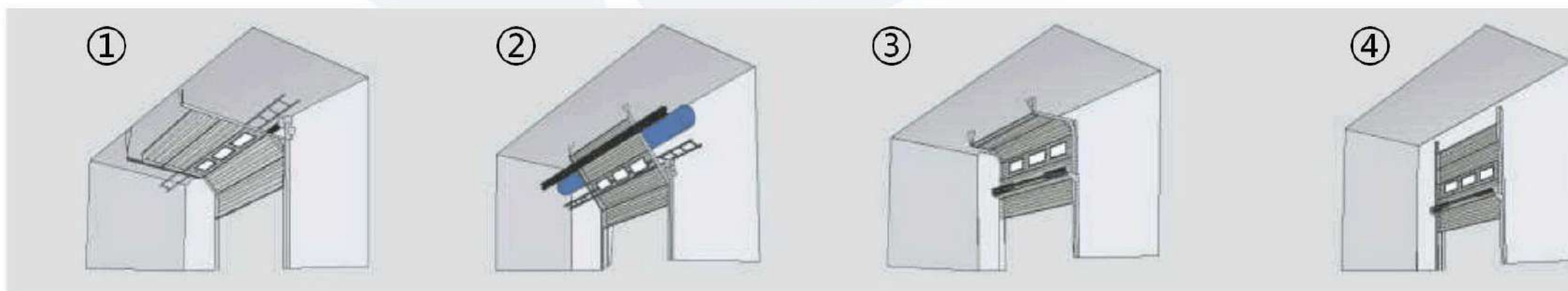
③

Vertical lifting turn sliding door



④

Vertical lifting door



Motor

- Motor Drive Voltage : 220V or 380V AC (+6%, -10%)
- F : 50Hz
- Power:800W
- Power output rated torque:50N.M
- Transmission mode: shaft drive or side chain drive
- Thermal protection operating temperature: 140 C
- Operating speed: 8m/min adjustable
- Working temperature -20~+60 degrees Celsius
- The industrial door opener is equipped with a small door safety protection switch to ensure that if the lifting door is running

