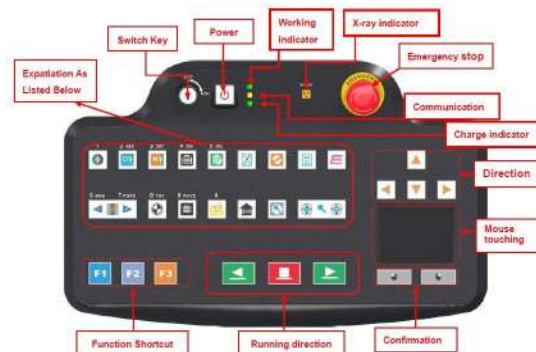
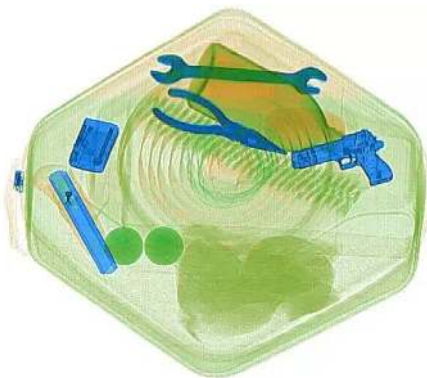


Intelligent Software & Safety Hardware



High resolution image

Friendly operation keyboard

The SE-AT10080 direct transmission X-ray system features a raised conveyor that enables sharper, larger screen images while making loading and offloading easier. This heavy-duty conveyORIZED scanner is designed for screening large objects, hold baggage and cargo for concealed weapons, explosives and contraband. Multi-energy color marking allows operators to quickly spot areas of concern in the most thickly packed parcels, bulk loads and baggage.

- Auto Sensing assures 100% screening of all items, no matter how thin or low
- Ideal for inspecting oversized and out-of-gauge objects



◆ General Specification:

Dimension: 3138.5mm * 1295mm * 1716.5mm (L*W*H)
G.Weight: 800 KGS
Tunnel Size: 1010mm×803mm
Conveyor Speed: 0.2m/s
Conveyor height : 338.5mm
Conveyor Max Load:200kg
Wire Resolution:38AWG
Steel Penetration: 27mm standard, 30mm typical
Film Safety :Guarantee ASA/ISO1600 Film
X-ray Leakage: <1 μSv/h (at a distance of 5cm From external housing)

◆ Image System:

Technical Principle: Dual-energy X-Ray Imaging
X-ray Sensor: L-Shaped Photodiode Array (**multi-energetic**) , 16bit Deep
Monitor: High Resolution Color, LCD Accord, 17inch
Image Display: High resolution of 1024 * 1280 pixel; Image Grey Level: 65536
Image Enhancement: 1-64times enlargement continuity, Color/BW, negative, high/low penetration, organic /inorganic Stripping, general enhancement, and pseudo color, etc.
Image Recall: 30 images recallable, retrieval.
Explosives & Narcotics Detection: Explosives & narcotics alarm and highlight according to atomic number signature
High Density Region Alarm: Impenetrable region alarm and highlight, for possible concealing of threats and contrabands
Threat Image Projection: Inserting fictional, but realistic images of threat items into baggage during screening operation, for maintenance of vigilance, as well as training and assessment of image identification capability
Image Archive: Up to 50,000 images stored automatically, enable transferring to USB disk, and converting to XF、PNG、BMP、JPEG、TIFF、GIF etc formats
Miscellaneous Functions : Time/date display, counters, user management, system-on/X-ray-on timers, power on self test, built-in diagnostic facilities, dual-direction scanning, system log, system standby and stimulant training, ADS etc.
Images process: 24bit real time processing ,4colors analysis, Images displayed marked date and ID NO ,Count the number of bags ,Memory gray level:65536
Software password protection : All software features of machine are online and password Protected and all software features are controlled from key board of machine only
Online recording facility : The machine has online recording facility and images can be transferred to external storage device through USB port.
Through put : 720 bags per hour for hand and checked baggage
Dual-energy distinguish retrieval Objects: Selective detection of Objects by atomic number, organic objects in orange, inorganic objects in blue, mixture in green.

◆ Operating Environment:

Operation temperature/Humidity: -10°C-45°C/5%-95%(non-condensing)
Storage Temperature/Humidity: -20°Cto 60°C/ 5%-95%(non-condensing)
Operation Power: 187~240VAC, 50/60Hz (Optional: 100VAC,110VAC,120VAC,200VAC)
Power Consumption: 1.0KW
Noise: <60db

◆ Computer Character:

CPU: Intel(R) Celeron(R), 2.60-2.70GHz
RAM Storage: 2GB
Hard Disk: 500G

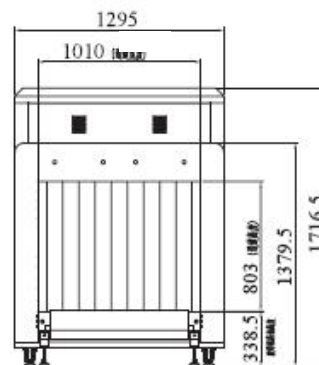
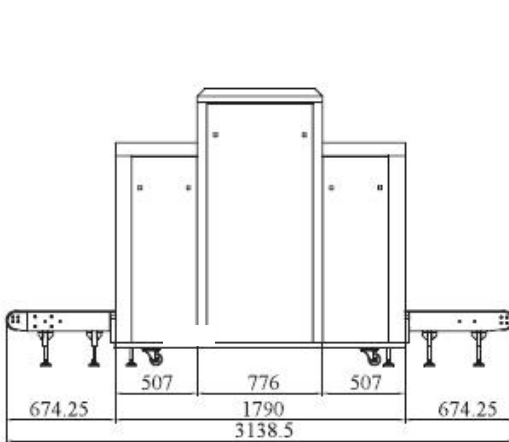
Computer system: Windows XP
Monitor: 2pcs 17" ,LCD . Resolution : 1280x1024
Stainless steel console for monitor

◆ X-ray Generator:

Anode Voltage: 140kv (160KV option)
Current tube: 0.3mA
Generate angle: 80 degree
Beam direction: from top to bottom

◆ Other Characters:

Cooling / Duty Cycle: Oil Cooling /100%
Extension Rollers: customize size length
UPS: 15 munites, 30 munites, 1 hour or more optional



Certificates: ☆ISO19001 ☆ISO14001 ☆OHSMS18001 ☆CE ☆FCC ☆ROHS☆Radiation Safety License