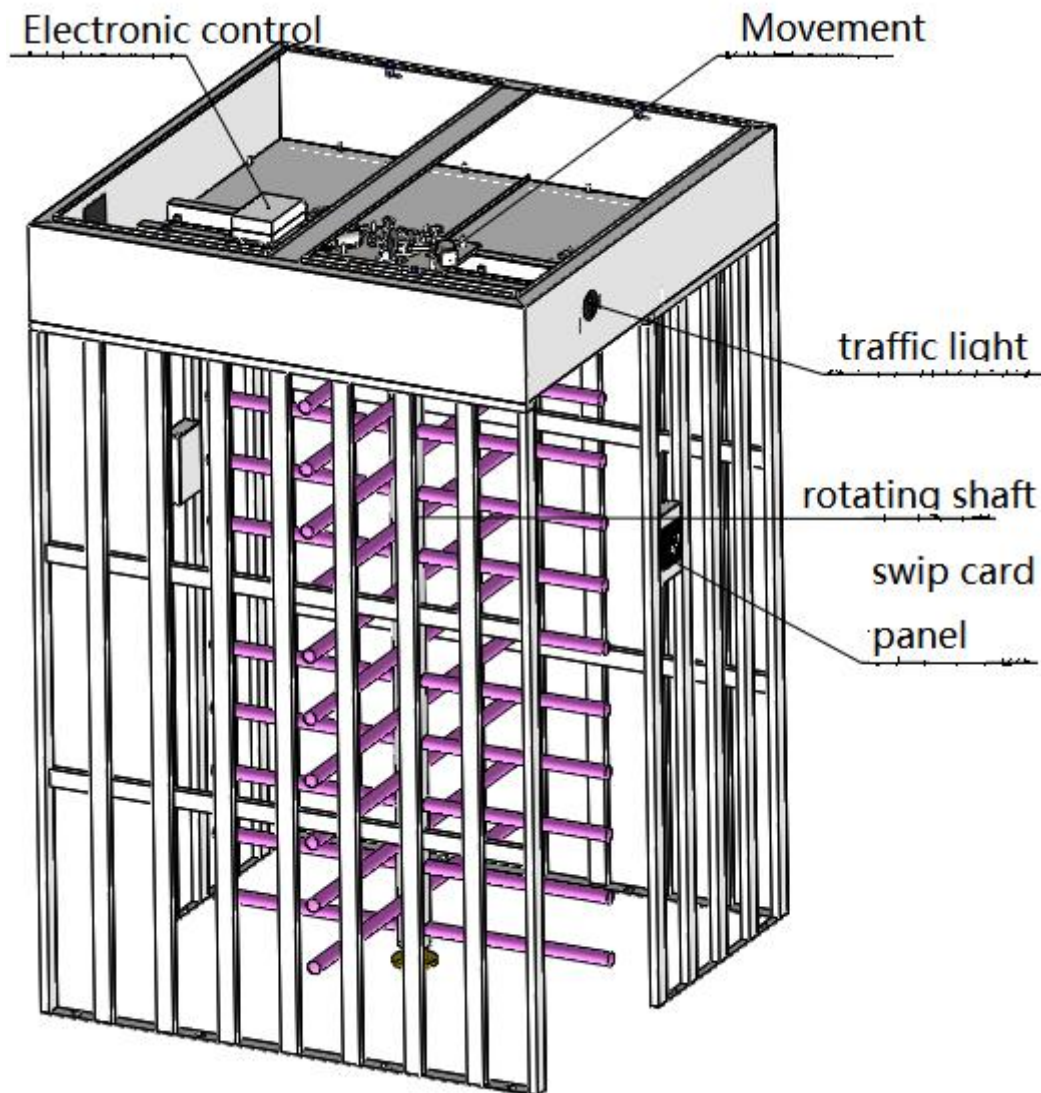


TS-FH20:Full Height Turnstile

Manual



1. Installation(Please ask supplier for installation video)

The most frequent problem in the installation and construction of the full-height turnstile is the bearing damage, which causes the consequences of difficult rotation, abnormal rotation noise, and the most serious direct jam. Now I share a basic installation and construction requirement to share with friends in need, many on-site construction engineers don't have any concept about the requirements of mechanical assembly, they just install it by intuition. I hope that the following content will be

helpful for correct construction.

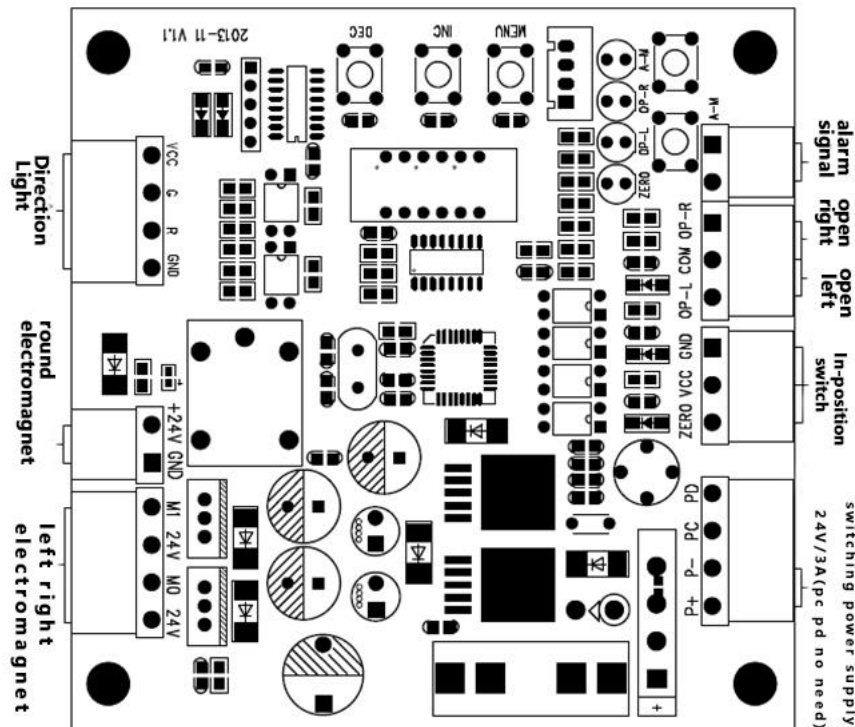
1.1 The inner steel ball must be coated with **solid** lubricant oil.

Note:due to the oil can't be shipped,so customer need to buy them locally.



1.2 In addition, the floor of the base must be horizontal and if the rotating rod is not concentric, the bearing will be damaged very soon.

2. controller wiring diagram



Menu setting description

Control panel buttons: “**MENU**” menu、“**INC**”up /increase、“**DEC**”down / decrease

Three operation buttons

Function description of each function key:

“**MENU**” key:

1. In the standby interface, **long press** this key to enter the system menu
2. In the system menu interface, select the corresponding menu and press this key to enter the menu parameter setting interface
3. After the menu is set, press this key to save the parameters and return to the system menu interface

“**INC**” key: Flip up to select the system menu and +1 function when setting parameters

“**DEC**” key: Flip down to select the system menu and -1 function when setting parameters

NOTE: In the system menu and menu setting interface, if there is no key operation within 5 seconds, the system will automatically exit the menu to the standby interface.

For example, if you want to change the passage time of the turnstile:

Step 1: **Long press** the "MENU" key to enter the system menu, use the "INC" and "DEC" keys to flip up and down respectively to select the "F 0 1" menu (see the menu description below).

Step 2: Press the "MENU" key to enter the passage time setting interface.

Step 3: Use the "INC" and "DEC" keys to increase and decrease the parameter value up and down respectively.

Step 4: After the setting is completed, press the "MENU" key to save.

Step 5: Exit the menu: turn the menu to the "F 10" menu, press the "MENU" button to manually exit the menu or automatically exit the menu without operating the button for 5 seconds.

Parameter setting description:

After the control board is powered on, the LED screen displays show <Run>.

A. System menu description:

1. “F01” :

Set the passage time. Within the set time period, the time will be automatically cleared after a person passes the turnstile, and if no one passes, the turnstile will automatically close when the time is up. (The system defaults to 5 seconds)

2. “F02”

Normally open function setting. 1: When normally open, only the left electromagnet is turned on. 2: When normally open, only the right electromagnet is turned on. 3: When normally open, open the left and right electromagnets. (The default value is 3, when normally open, both sides of the electromagnet are turned on)

3. “F03”

The working mode of the turnstile. 0: Free pass (commonly used on full height turnstiles) 1: power off arm fall down(default 1 power off arm fall down)

4. “F04”

memory function. Whether there is a memory function when opening or closing entrances and exits, it is generally used when swiping the card to open the turnstile, when one person has swiped the card and has not passed, whether to remember the card swiping of other people. "Prohibited" means that after the first person who swipes the card pass, the second person can swipe the card to be valid; "Allow" means that all the people who swipe the card are allowed to pass continuously. (The default value is 0, memory is prohibited)

5. “F05”

Repeated turnstile opening and closing tests,are mainly used to test the stability and aging test of the turnstile control board.

Note: In the test mode, press the MENU button to exit the test

6. “**F06**”

Zero position signal setting. 0: Detected the zero position signal and immediately close the turnstile(standard mode of three-roll turnstile, the main board is set to 0 by default); 1: Detect the zero position signal, and then wait for the zero position signal disappear then closing the turnstile(commonly used on full height) (default Value 0)

7. “**F07**”

Turnstile normally open setting. This parameter is used to detect the continuous turnstile opening signal. When the continuous turnstile opening signal exceeds the set parameter, the system enters the normally open state. , If the opening signal to the turnstile is a continuous signal, the turnstile will always be in the open state. After the continuous signal is disconnected, the turnstile will return to the standard mode. (The default parameter is 6 seconds, that is, if you press the turnstile opening key "Left Open or Right Open" for more than 6 seconds, the gate is normally open, release the turnstile opening key, and the turnstile will recover)

8. “**F08**”

Opening delay. This parameter is only valid when the memory function is enabled. After the memory function is enabled, the turnstile opening delay when there are many people pass. This function can prevent the turnstile from opening again when the previous person has not passed the channel. (The default value is 0, no delay)

9. “**F09**”

reset. All parameters of the motherboard are restored to factory settings.

10. “**F10**”

Exit the menu. Or automatically exit without key operation within 5s.