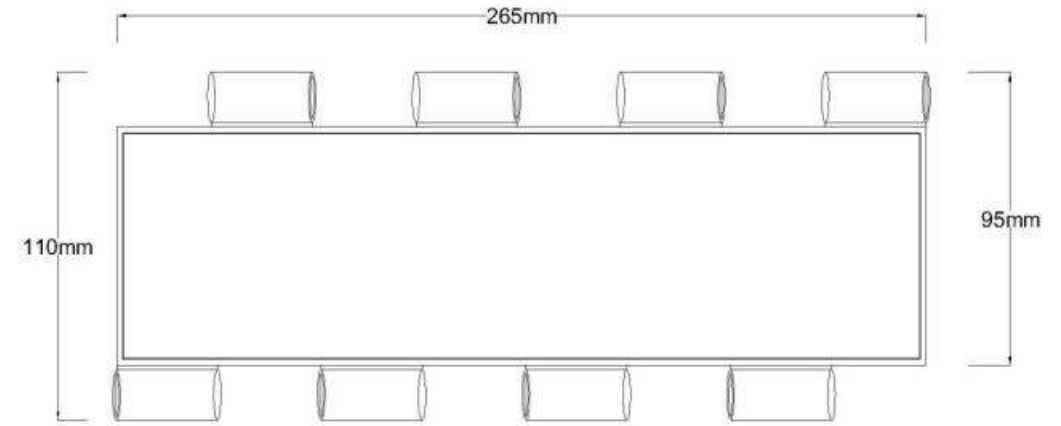


Finished product model



Name: crystal slat
Material: PC
Spec.: 265*110
Color: transparent
T: MT1.4mm/ST 3.0mm



Name: joint pipe
material: SUS 201#
Spec.: $\Phi 12.5\text{mm}$
T: 0.55mm



Name: guide rail
Material: SUS 201#
Spec: 100mm Width
Color: nateiral
T: 1.15mm



Name: bottom rail
Material: SUS201#
Spec.: 75*45 squire tube
color: nature color
T: 0.75mm



Name: rolling pipe
Material: GL steel
Spec.: 6inches
T: 1.8mm

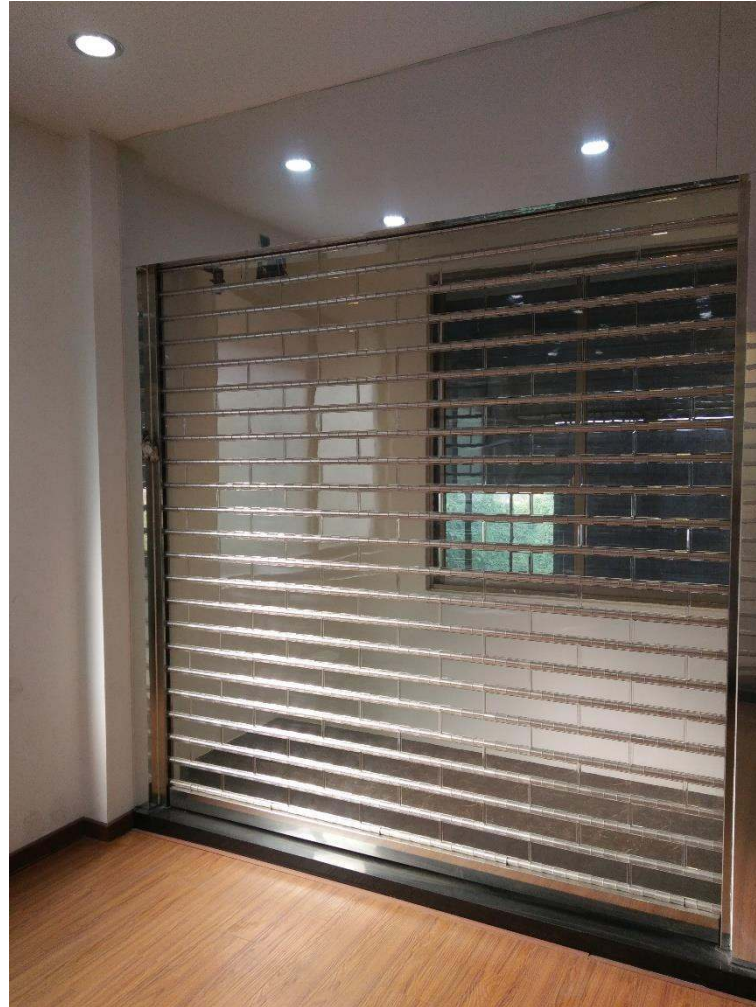


Name: china motor
brand: JL
Material: copper core
Spec.: 800kg/220V 50Hz
with 2pcs remote control



Name: cover box
Material: SUS201#
Total lenght=8100mm
The zinc square pipe is used as the support frame,
and the cover plate is buckled on the galvanized
pipe. It is a split type. When the customer is
installed on site, it needs to be assembled in two
butt joints.

Finished Product



Finished Product

