

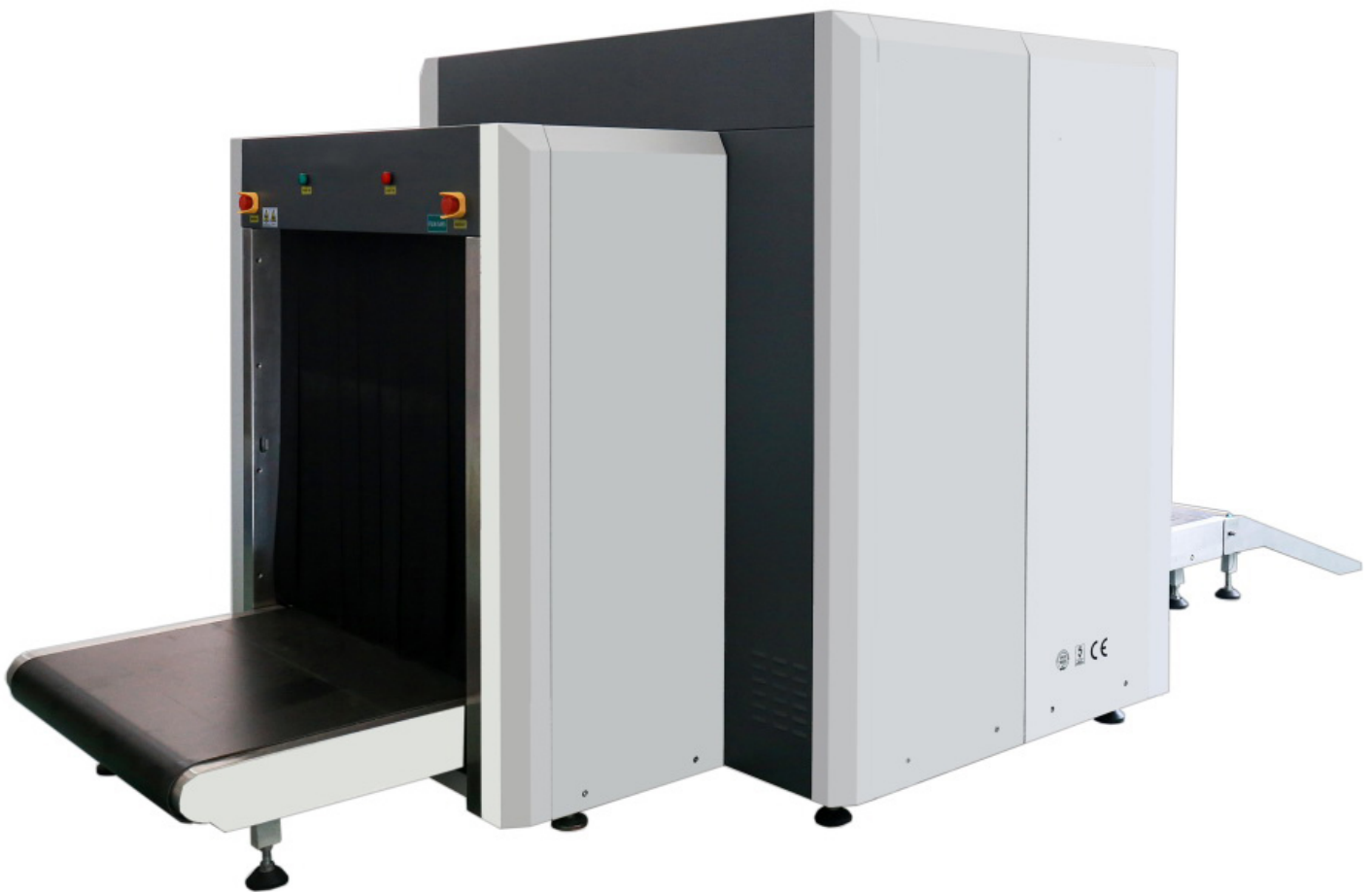


Dual View X Ray Baggage Scanner

Model:SE-SPX100100DV

◆ Brief introduction: Intelligent Software & Safety Hardware

SE-SPX100100DV is a new type dual view, dual-energy X-ray Baggage Scanner. It integrated two x ray generators, two sets of detector boards. SE-SPX100100DV has more efficient image processing technology. Horizontal and vertical images from the two viewing angles, will be simultaneously generated, while scanning a bag. It effectively solve the difficulty of reading the image of overlapping items in the luggage. This model helps the security person identifying dangerous goods and contraband more accurately and effectively.



Keyboard with USB port, it is convenient to directly connect keyboard to download images .

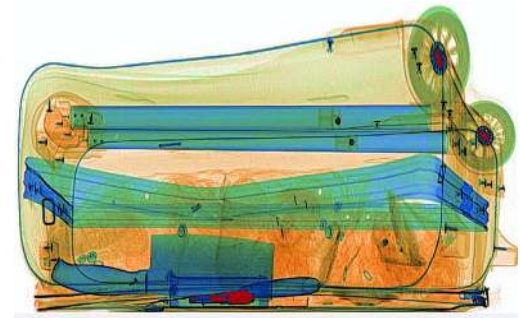




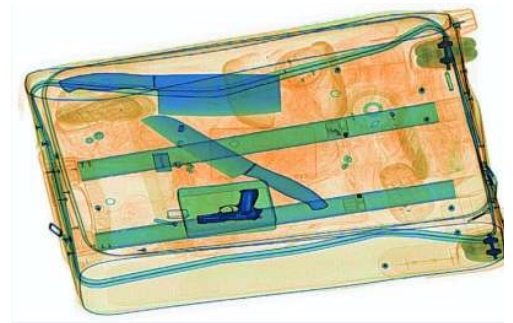
Dual View X Ray Baggage Scanner

Model:SE-SPX100100DV

Perspective 1



Perspective 2



◆ Technical characteristics

- Multi-energy, dual x ray generator, dual view technology to improve the security efficiency;
- Clear image, high penetration and resolution;
- Superb material classification, automatically alert drug, explosives
- Equipped with a professional industrial computer, integrated network and USB port, can automatically store and output test results
- New X ray protection technology
- TIP function
- Support JPG, BMP special image format conversion, dump
- Two monitors both show image on the middle

- **Windows 7 operation system;**
- **Automatic save scanned image;**
- **Friendly operation System;**
- **160KV KV-TEC x ray generator**
- **UK SENSTECH detector board**

- **Clear and distinct image;**
- **Scanned imaged can zoom up to 64 times;**
- **Partly zoom up to 3 times;**
- **13 kinds of image processing functions and 6 kinds of pseudo color;**
- **Reliable performance.**



Dual View X Ray Baggage Scanner

Model: SE-SPX100100DV

◆ Specifications

Physical size	3595.5*1685*1795mm (L*W*H)
Weight	1480kgs
Tunnel size	1010mm*1005mm (W*H)
Conveyor speed	0.20m/s, Bi-direction scan
Conveyor height	300mm
Maximum load	200kgs(evenly distributed)
Wire resolution	38AWG standard, 40AWG typical
Spatial resolution	Level: dial.3mm copper wire, Vertical: dial.3mm copper wire
Penetration(steel)	34mm
Penetration resolution	32AWG(0.202mm)
Display	Double 21.5 inch color LCD monitor,high resolution: 1280*1024
Cooling cycle	Oil Cooling /100%
X ray generator	2 units, both 160KV, working in 150KV
Beam direction	View A : from top to bottom; View B: from Side
Image process	Black and white / color, anti-color, high energy penetration, super enhancement, histogram equalization, forced scanning, magnifying glass, image pull back / front pull, image storage
Material classification	Organic material show in orange; Inorganic material show in blue; Mixed and light metal materials show in green
Keyboard	Multi-function keyboard with USB port to connect PC and 9pcs Direction Navigation keys. meanwhile with soft keyboard to log in to the software
Section and magnification	Any area selection,1 -64 times magnification, support continuous amplification
Image pull back	Can pull back 50 images
Storage capacity	Can store at least 100,000 pcs image
X ray leakage	<1μSv /h(at a distance of 5cm From external housing),meet all international and domestic health and safety standards
Film safety	guarantee ASA/ISO1600 Film
Software system	F1,F2,F3 programmable key,high density alarm,TIP: date/time display, baggage Count, User management, System work timing, Radiation timing, self-inspection while power on, save and search image, automatically maintenance and diagnosis system, image recognition training.
System protective class	IP20
Operation control panel protective class	IP43
Optional function	Video surveillance system, LED prompt screen, voltage stabilizer, UPS back up, standard test piece.
Operation temperature/Humidity	-10°C~+45°C; 5%~95% (non-condensing)
Storage Temperature/Humidity	-20°C~+60°C 5%~95% (non-condensing)
Operation power	100-240VAC , 50/60Hz
Power consumption	1 KVA



Dual View X Ray Baggage Scanner

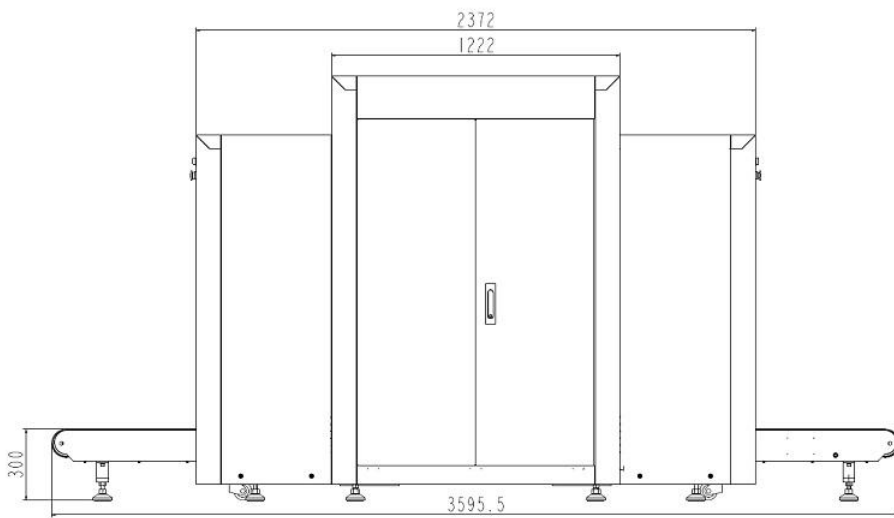
Model:SE-SPX100100DV

Noise	Less than 55db
Computer	Inter(R) Core (TM) i5-2400 CPU@3.1GHz; Memory(RAM):4GB; Hard disk: 465GB; Windows 7, 64-bit operation system

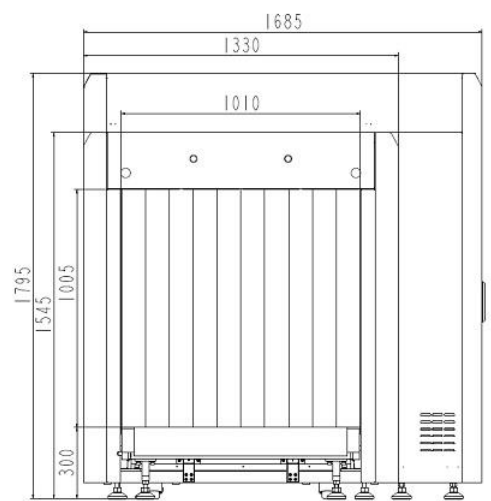
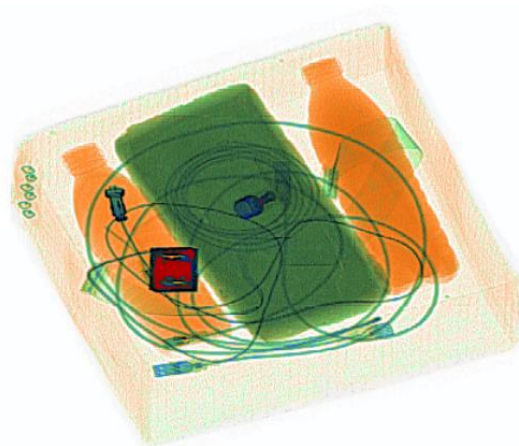
◆ Applications

- Customs, ports, border stations, railway stations, military, express, postal, road industry, government agencies and other key places of continuous, long security checks
- Applicable to large places of traffic, scanning large size parcels

Dimension:



View 1



View 2

