

Maintenance:
 Forming maintenance consciousness
 The tripod turnstile needs to be maintained regularly and repaired once it is damaged. It is recommended placing warning signs at conspicuous positions for alerting every passersby to pass carefully and in good order. Reasonable maintenance consciousness helps to guarantee long-term usage of the tripod turnstile.

Regular maintenance
 Cleaning and protection liquid dedicated for stainless steel are recommended to wipe the outer shell of the equipment regularly. The tripod turnstile used outdoors or in an environment with lots of dust must be maintained at least once a year, for example, clean up the dust and add appropriate lubricating oil to the disk wheel. Please note that regular maintenance should only be performed after power-off, as shown in F-7.

Warranty

Thank you for purchasing the products from our company! In order to protect your rights, relieve your worries, and improve the after-sales service to customers, this warranty is specially formulated. Please read carefully and provide your comments and suggestions.

- 1.The products enjoy free warranty service for 24 months from the date of delivery.If this product is out of warranty, we will charge the cost of the parts according to the product failure.
- 2.The repair products must be properly packaged and transported (freight paid by customers' side), we will not be responsible for any damage or loss during the transportation process.
- 3.During the period of free warranty, if the following situations occur, we have the right to refuse the service or collect materials fee , service fee , shipping fee.
 - 3.1.Damage caused by abnormal operation and human or natural disasters.
 - 3.2.Damage caused by disassembly and replacement of any part of the machine (such as: wiring, parts).
 - 3.3.The warranty label is damaged.
- 4.When the product fails, please contact the after-sales service center directly.

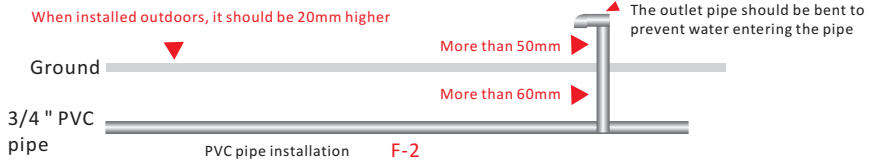
Product Name	Model	
Company/Name	Order Number	
Repair Time	Repair Records	Repairer Signature

TRIPOD TURNSTILE & FULL HEIGHT GATE USER MANUAL

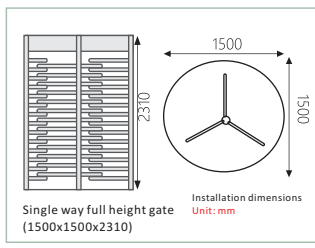
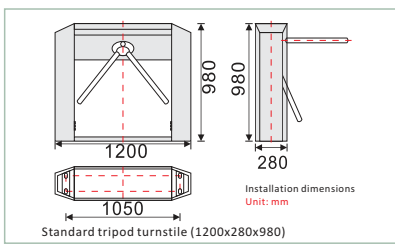
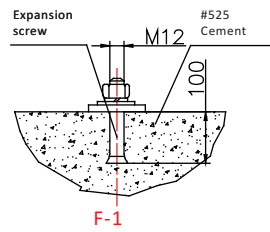


Chapter1 Infrastructure and installation

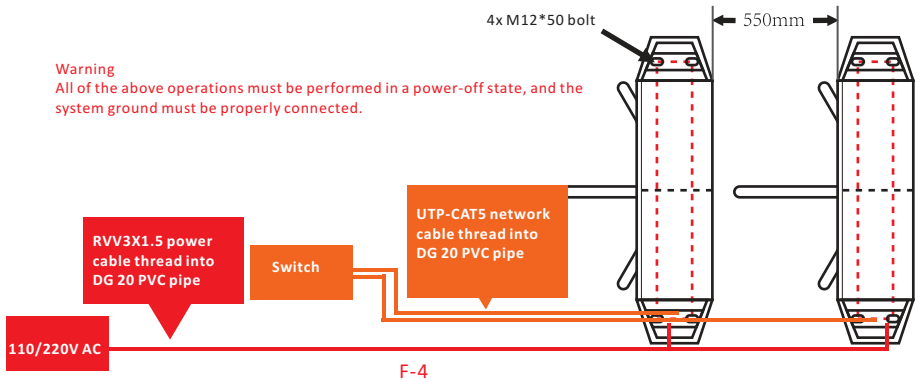
- 1)Check accessories, prepare tools for drilling and wiring, planing site, requires weak current technician to operate.
- 2)Composition based on actual system, use the purchased model to carry out overall planning and determine the installation position of each turnstile.
- 3)According to (F-1 and F-3), open the turnstile door, align the bolt holes of the base with the anchor bolts, and tighten the nuts. Installation requirements: Determine the installation hole position, and embed 4 M12 expansion bolts at the installation position.
- 4)According to (F-2), separate the strong and weak cables with 3/4 " PVC pipes and bury them in the corresponding position with small mud.



Note: The depth of the buried PVC pipe should be greater than 60mm, the height of the exposed ground should be greater than 50mm, and the outlet should be bent to prevent water entering the pipe. When the equipment is installed outdoors, a concrete installation platform with a height of 100 to 200 mm should be built at the equipment installation site, and rain shelters such as sun sheds should be installed above the equipment.



- 6)According to F-4 and F-5, wiring the power cable, access control system cable and network cable.



Chapter2 System parameter setting operation instructions

KEY: "MENU" for menu, "INC" up/plus, "DEC" down/minus
Function description of each key:

- "MENU": 1: Press this key in standby mode to enter the system menu;
- 2: In the system menu, select the corresponding option and press this key to enter the parameter setting;
- 3: After setting the options, press this key to save the parameters and exit to the system options.
- "INC": When scrolling up through system options and setting parameters +1.
- "DEC": When scrolling up through system options and setting parameters -1.
- NOTE:** No operation within 5 seconds in the system menu and option setting interface, the system automatically exits the menu and returns to standby

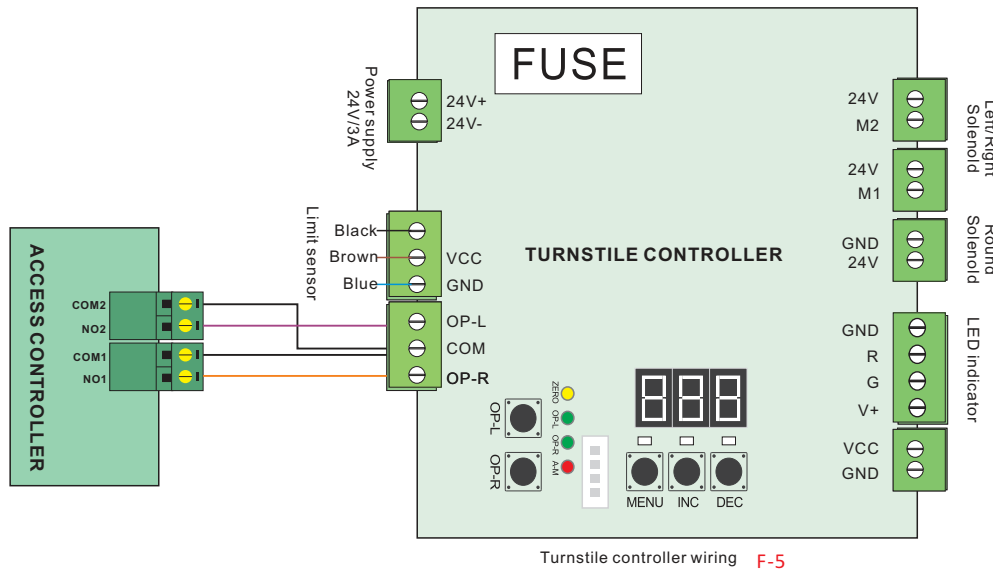
- For example, you need to change the unlock timeout time:
- Step 1: Press "MENU" to enter the system menu, use "INC", "DEC" to scroll the options and select "F01";
 - Step 2: Press "MENU" to enter the parameter setting options;
 - Step 3: Use "INC" and "DEC" to adjust the parameter value;
 - Step 4: Press "MENU" to save;
 - Step 5: Scroll to F06 and press "MENU" to exit the menu manually, or wait for 5S timeout to exit the menu automatically.

<RUN> is displayed on the LED screen after the turnstile controller is powered on

System menu description:

1. "F01" Set the unlock timeout time. If someone passes A within the set time, the time will be automatically cleared. If no one passes, A will be automatically locked after timeout(Default: 5s).
2. "F02" Enable and disable pass. 0: Bidirectional disabled; 1: Bidirectional enabled; 3: Right direction disabled, left direction allowed. (Default:1)
3. "F03" turnstile work mode. 0: Auto-pass (for full height gate setting), 1: Power off drop arm. (Default: 1)
4. "F04" memory function. If one user swipes the card but does not pass through the gate, whether to remember the swipe records of other users. "Disabled" means swiping the card for the first user and passing through the gate, and then swiping the card for the second user to be valid; "Allowing" means how many users swipe the card, that is, how many users pass through the gate. (Default: Disabled)
5. "F05" Aging test, press "MENU" exit aging test mode.
6. "F06" Exit menu.

Chapter3 FAQ& Maintenance



Turnstile controller wiring F-5
Note: It is forbidden to draw power from the turnstile controller to other equipment without permission. Damage to the controller caused by this is not covered by the warranty.

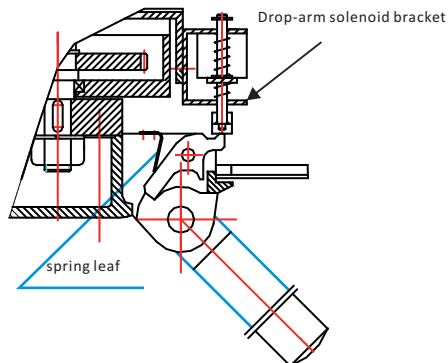
Warning:

- 1) Please do not use this device during mines to ensure personal safety and prevent damage to turnstile.
- 2) Before testing, please check the wiring diagram to ensure that it is correct before powering on the test.
- 3) Ensure that the System protective ground is connected securely, otherwise it is not allowed to use and prevent personal injury!!!

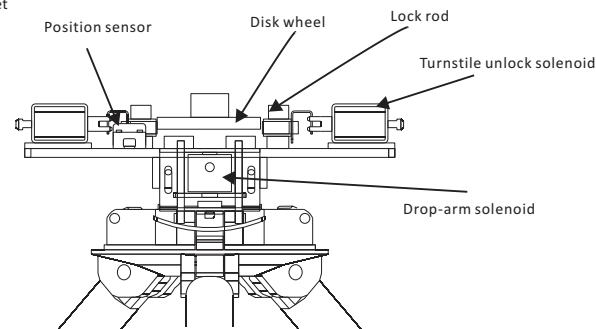
- 7) Access controller and turnstile controller wiring(Refer F-5).
OP-L/COM/OP-R are the connectors for access controller

Access controller-----Turnstile controller
NO1-----OP-R
COM1-----COM
NO2-----OP-L
COM2-----COM

Note: The third-party access control system's lock-relay-trigger-time should be 1 second or less than 1 second. Do not use electrically charged objects to connect to the port of Opening signal input, otherwise it will damage the control board.



F-6



F-7

Q1	LED indicator after power on, no display, and cannot read the card.
A1	It may be caused by the power supply or circuit. Check whether the connection cable and power cable are damaged, or whether the wiring is loosened.
Q2	Occasionally a drop arm appears during use.
A2	a. The screw of the bracket of the drop-arm solenoid may be loose. Inspection steps: 1. Open the lid of turnstile with keys; 2. Loosen the 2 M4 hex screws that secure the drop-arm solenoid bracket(Refer to F-6); 3. Move the bracket up a bit; 4. Tighten the 2 M4 hexagon socket screws of the bracket; 5. Power on and test again, repeat step2 to 4 till to working fine. b. The spring leaf inside the turnstile is not strong enough(Refer to F-6). Please inform our after-sales service department or authorized service agency in time for replacement.
Q3	The turnstile allows people to continuously passing one-way side.
A3	1. Check the turnstile-opening solenoid. 2. Check if the access controller "Lock driving duration" is set to 1s. 3. Check whether the turnstile-opening solenoid is operating and check whether something is stuck at the turnstile-opening solenoid, as shown in F-7. 4. When the tripod arm rotates, check whether the led light of the position sensor is flickering.
Q4	The arms of the tripod turnstile cannot be lifted manually after the equipment is powered on.
A4	It may be caused by the problem of related components or drop-arm solenoid. Check whether the drop-arm solenoid is operating, and check the working status of the solenoid, as shown in F-7.
Q5	The tripod turnstile does not grant an access after successful authentication.
A5	It may be caused by lack of permission or a circuit problem. 1. Press unlock test button in the turnstile control board, as shown in F-5; 2. Short-circuit the ports "OP-L, COM" and "OP-R, COM"; if the turnstile is successfully opened, please check the access controller; 3. Check whether the user has the permission to pass.