

Ultrasonic Parking Guidance System for Indoor Parking



With ultrasonic parking sensor, the parking guidance system can help the motorist to find the available parking space easily.



Parking Guidance



Available Parking Space



Data Statistics



Application Scenario



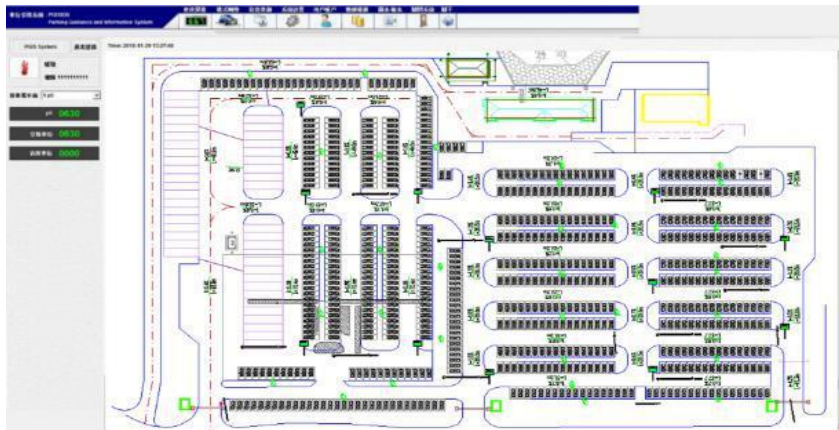
Entrance Guidance Screen



Parking Guidance Display



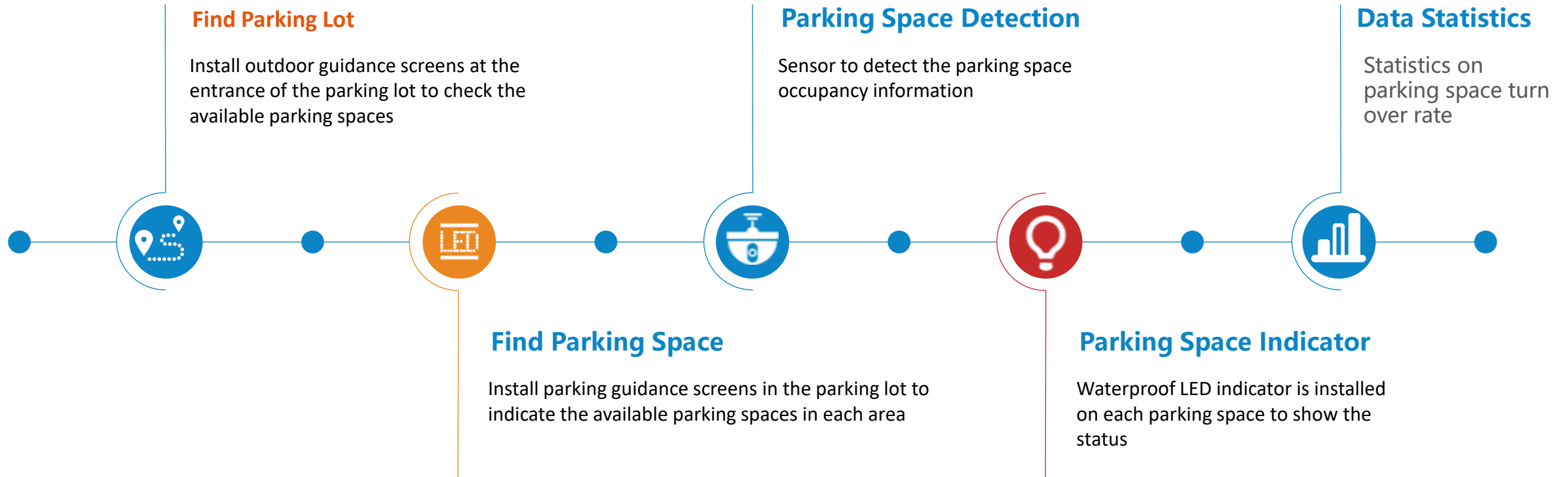
Ultrasonic Sensor



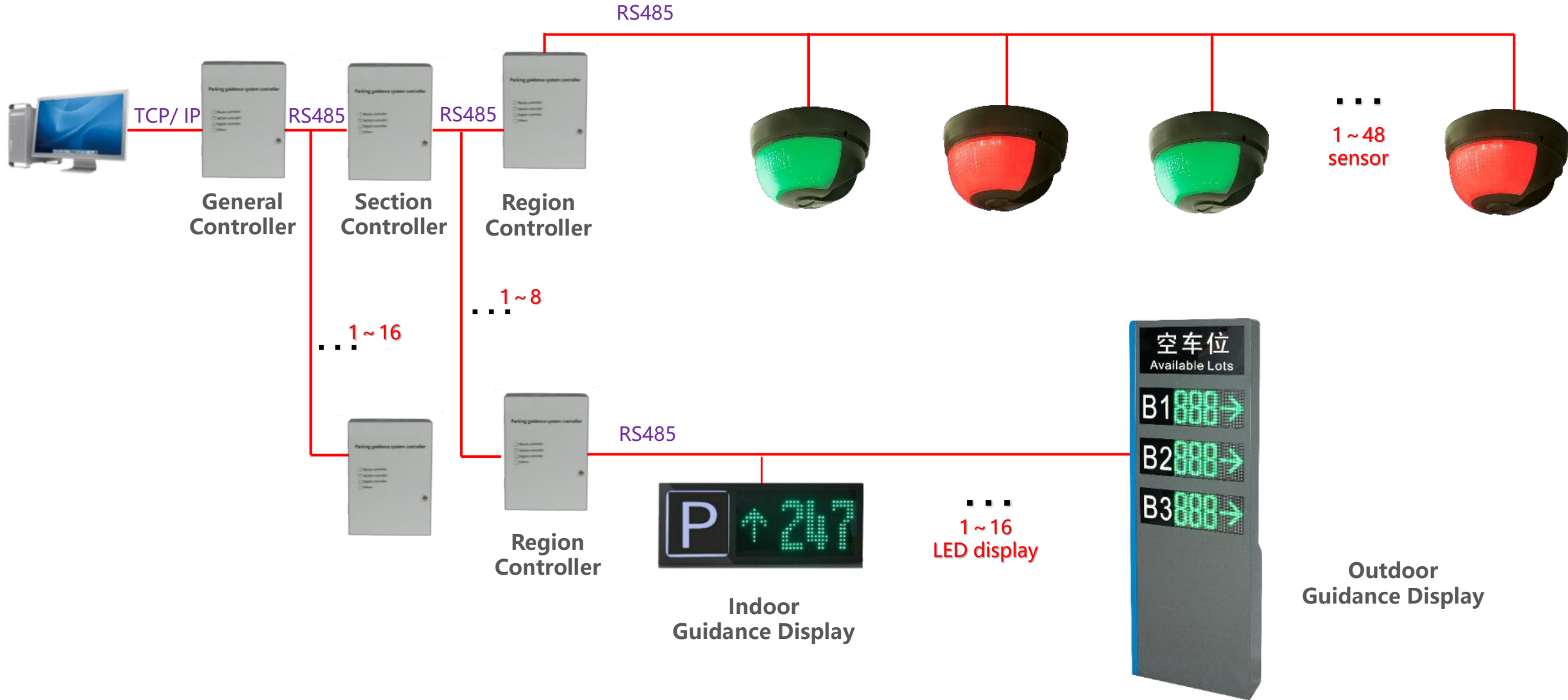
Map on Software



Application Scenario



System Structure-Integrated Type Ultrasonic Sensor

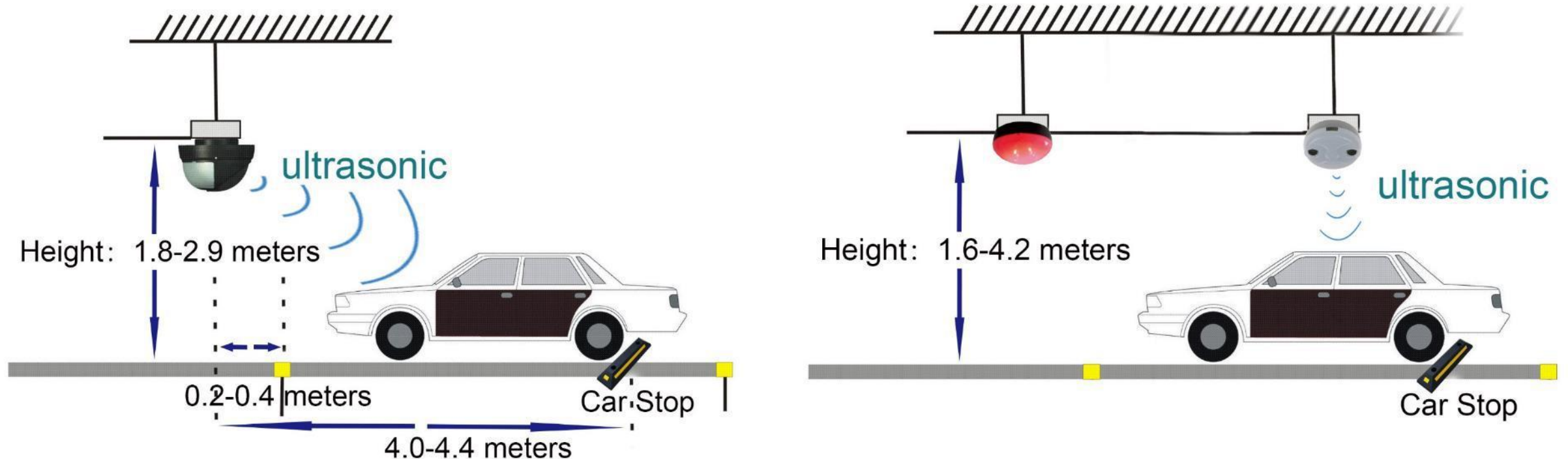


Installation Diagram

The split ultrasonic sensor is installed on the center of parking space, the sensor directly pointing to the car roof, the detection accurate rate is nearly 100%. The integrate ultrasonic is installed in the front of parking line, the sensor pointing to the car at an angle, if the car is parked in a wrong way the sensor can't detect the vehicle, so the detection accurate rate is lower.

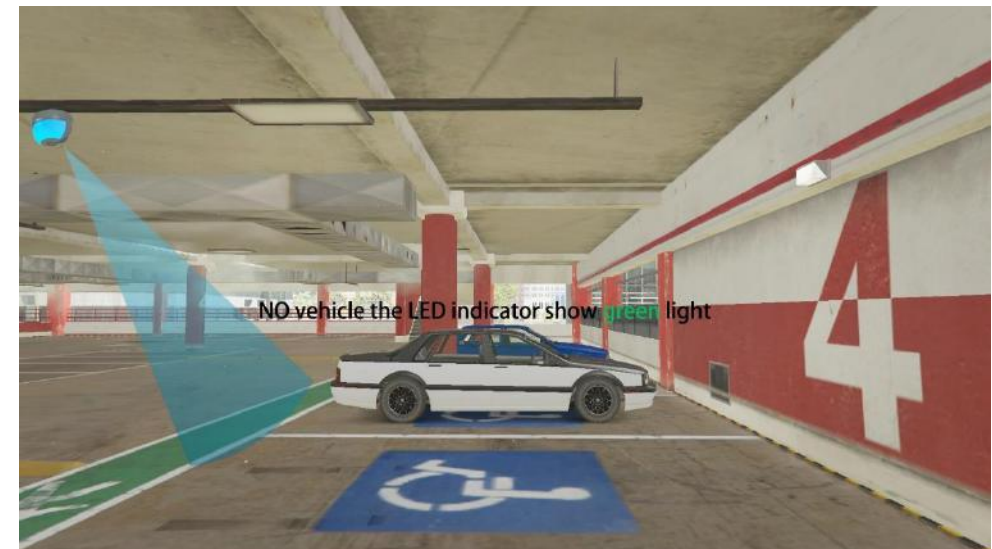
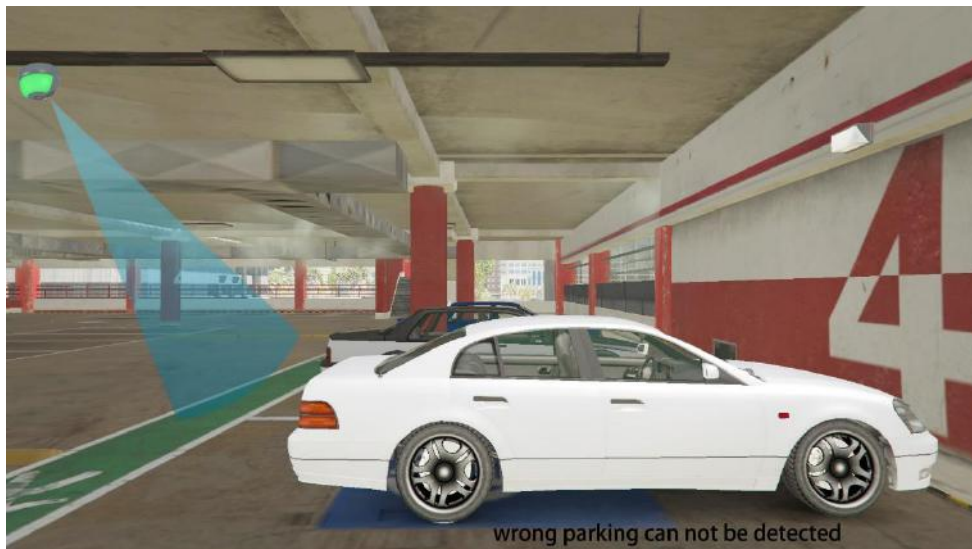
But the integrate sensor with built-in LED, only need to install one device, it can help to save the construction cost.

If installation height is above 2.9 meters, suggest use the split type ultrasonic sensor.



System Introduction

Ultrasonic sensor detects if there is vehicle on slots and control LED indicator light show **red** (occupied) or green (empty).



Integrated Ultrasonic Sensor

The Integrated ultrasonic sensor is designed for detecting vehicles in front of each parking space. and ultrasonic-based technology employ for detection of real-time parking space occupancy information, the space status is displayed on built-in LED indicator.

- ◆ All in One Ultrasonic Sensor
- ◆ Built in LED Indicator, Red/ Green, Blue Optional
- ◆ RS485 Communication Protocol
- ◆ Snap on Base, Easy to Install and Adjustment
- ◆ Real Time Monitoring Parking Space Status

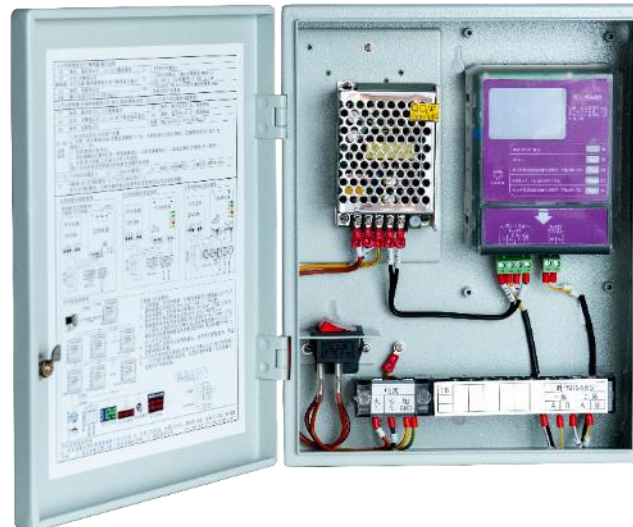
Type	Parameter
Input Voltage	10V-30V, Recommend 24V
Detection Type	Ultrasonic
Interface	RS485
Detection Distance	50cm~280cm
Application	Indoor Covered Parking Lots
Working Temperature	-25°C to 65°C
Size	130*90 mm



System Controller

Guidance system use three-level controller, the general controller uplink to computer via TCP/IP, section controller collect data from region controller and send to general controller, region controller connect to terminal device as parking sensor and guidance LED display.

Type	Parameter
Input Voltage	AC220V±10%
Communication	RS485
Capacity	1 GCM connect 1-16pcs SCM 1 SCM connect 1-8pcs RCM 1 RCM connect 1-48 sensor/ LED
Size	260*200*58 mm



Entrance Guidance Display

- ◆ High light LED display module
- ◆ Built-in light box
- ◆ 3 digits number and arrow show direction
- ◆ Arrow direction adjustable, or set as 4 digits number
- ◆ Support 1-5 LED display module
- ◆ Outdoor waterproof housing

Type	Parameter
Input Voltage	AC220V±10% /1A
Output Voltage	DC12V/3A、 DC5V/8A
Interface	RS485
Baud Rate	9600bps
LED Module	P4.75、 64*32 dot array When number 0, show red color; Number as 1 ~ 9, show yellow color; Number above 10, show green color.
Brightness	256 level adjustable
Temperature	- 20°C - 65°C
Size	1600*550*150 mm

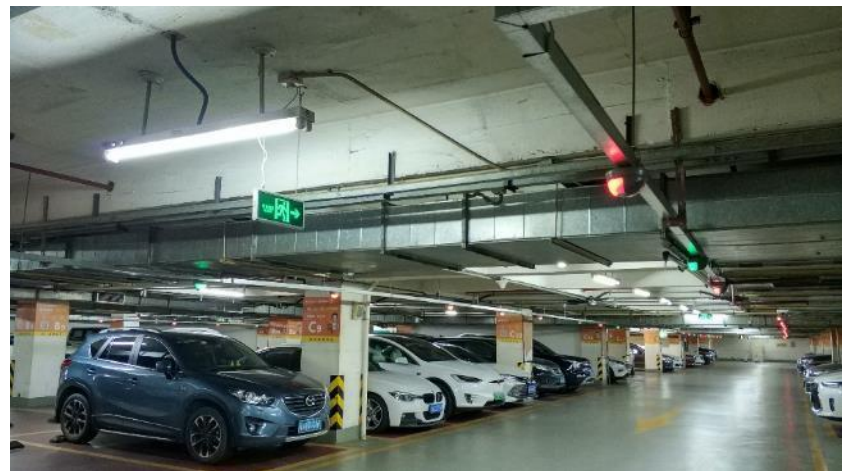
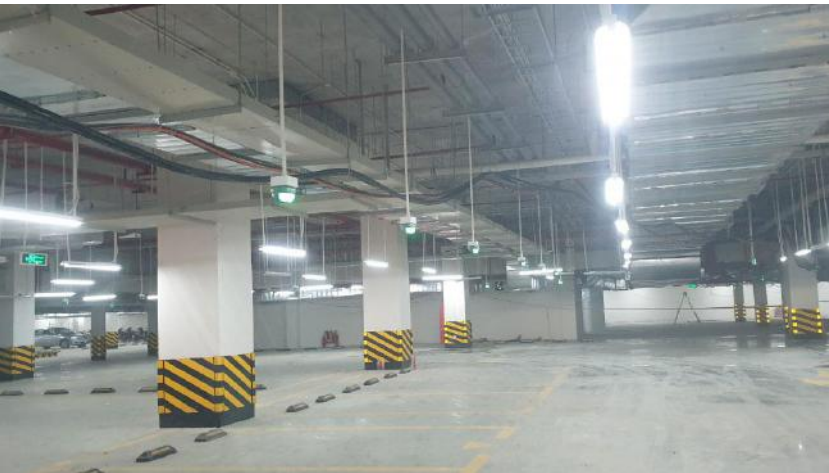
The LED guidance display install at entrance of parking lot, showing number of vacant parking space for whole parking lot or each floor.



Split Ultrasonic System



Integrated Ultrasonic System





Thank You



www.carparkcenter.com



www.แขนกันรถอัตโนมัติ.com



02-1054034



@CarParkSystem



@Dpark



คอลล์เซล์ชั่น จำกัด
ไม้กั้นรถยนต์ แขนกันรถอัตโนมัติ

