

(1): Click "Configuration" button.

(2): Input the IP address, subnet mask and gateway address you want to set respectively in the three lines

(3): Click the "Save" button to save the related Setting information

Note that only the printers and computer within the same network segment are allowed to enter the WEB configuration interface.



x-printer

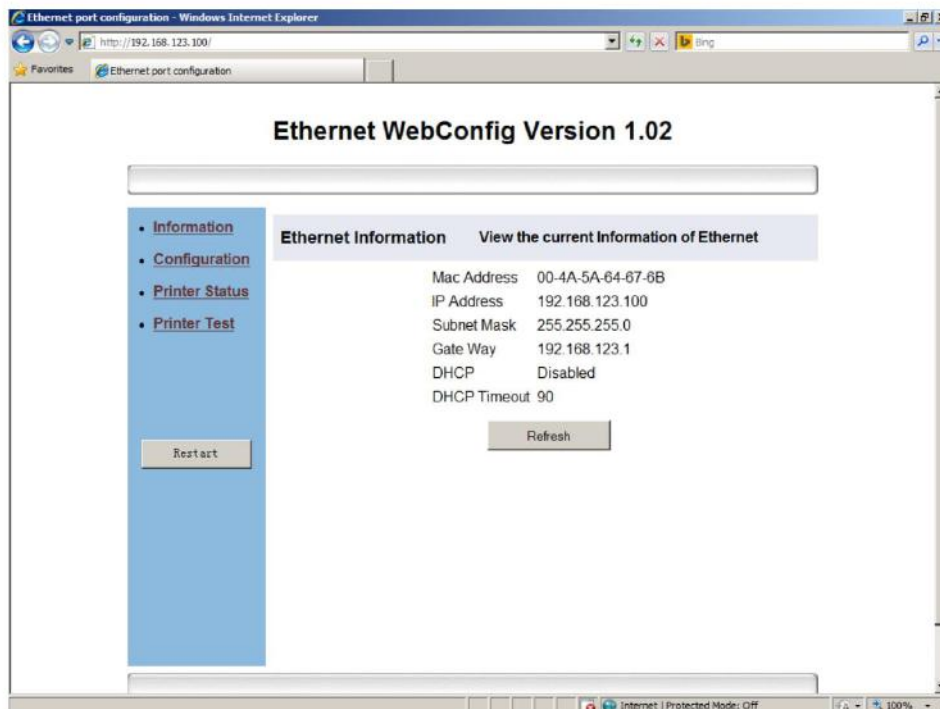
扫描二维码，关注
芯燁官方微博平台

- (1): Select a serial port or USB port
- (2): Select a printer type
- (3): Choose HEX
- (4): Input command code to change the IP in the printing content box: 1F1B1F91004950C0A81364, this is the IP address, as shown in the above picture, IP address is 192.168.19.100, and the corresponding hexadecimal is C0A81364.
- (5): Finally click "print" button, and the printer will beep once, it suggests the command has been sent successfully. Finally, self check the printer again to see if the IP address has been modified.

III. Make configuration by browsing the WEB

For **three ports printers**, the second method to change the IP address is through the WEB. The specific method is as follows:

1. Make the computer IP address and the printer IP address get into the same network segment as described in details above.
2. Open your browser; enter the IP address of the printer in the address bar, for example, the current printer IP is 192.168.123.100, as shown in the picture below



3. Printing the Self test again to see if IP address has been modified successfully:

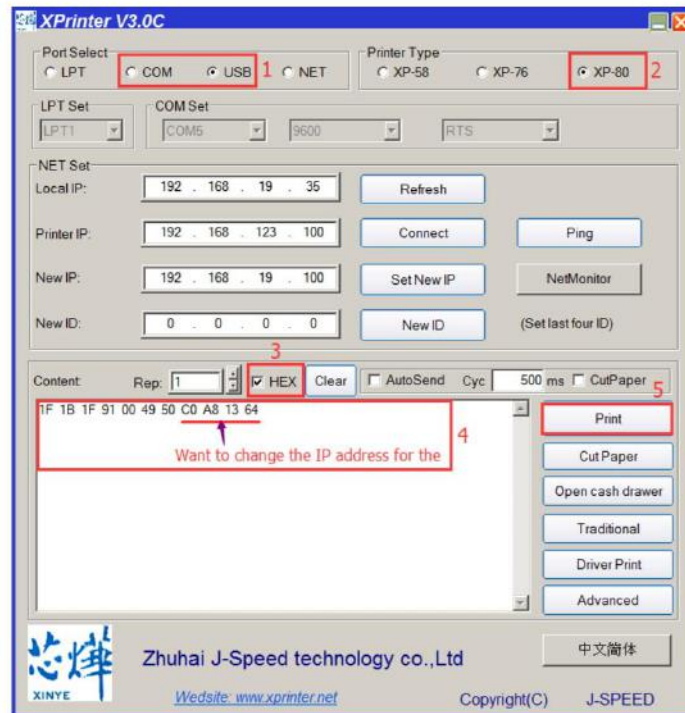


The above self test page shows that the new IP address has been set successfully. This method is suitable for all Ethernet port printers.

II. Make configuration by sending the command codes

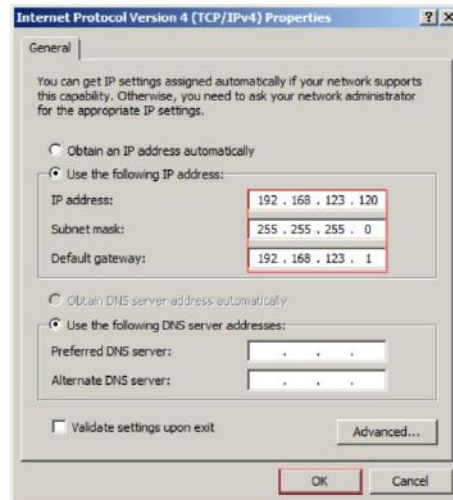
There are two other modification methods for **three ports printers**, the first method is as follows:

1. Connect the printer to the computer through the serial port, USB port and the Ethernet port, then test the USB or serial port for normal communication, if the test is OK, send command via a serial port or USB port to modify the Ethernet port IP (Command:1F1B1F91004950ip1~ip4). Please refer to the following picture:

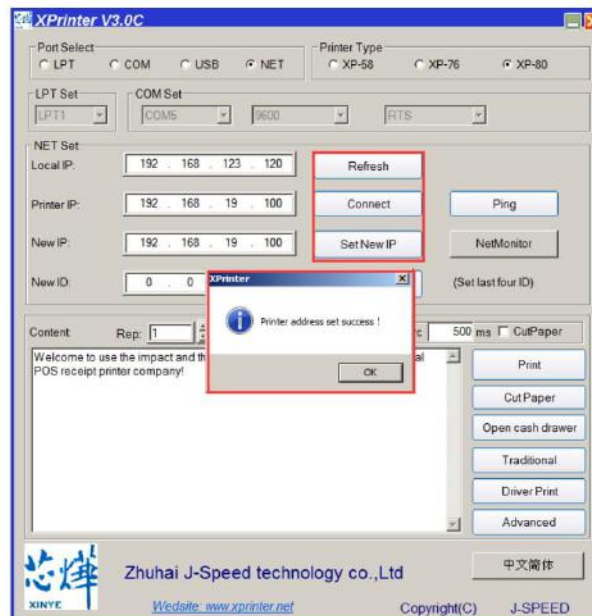


Note: if the above methods to modify the IP address are not successful, it's suggested that the computer IP address and the printer IP address shall be set within the same network segment: 193.168.123. XXX, before connecting the printer (excluding the router method) to the computer and using tools to modify the IP. Specific method is as follows:

1. Click online neighbors - local connection - property - Internet protocol, then manually configure IP as shown in the following pictures:



2. Reopen the test software again, click "refresh" button to update the local IP address, then click the "connection test" button, after the prompt window indicating the successful connection appears, click the "set up IP" to modify the printer IP address. Please refer to the picture below:



2.1 Port selection----- NET

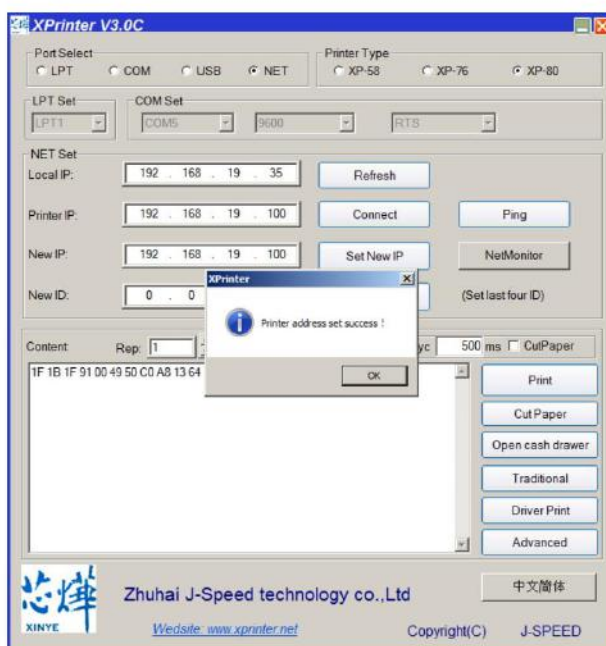
2.2 Printer Type----- XP-80

2.3 Local IP ----- The computer IP address. Click "refresh" button, the computer IP address will be displayed. (Note: if the refreshed IP address is 0.0.0.0, then it means the local IP conflicts with other devices, and make sure your IP address is unique)

2.4 Printer IP -----the IP address on the self test page. (If the local IP and the printer IP are in the same network segment, printing test can be conducted by clicking "connection test" button.)

2.5 New IP address -----Enter the IP address you want to change to, click "set up IP" button to complete the IP setting.

3. Click "set up IP" button, the computer will wait for 10 seconds before a prompt window appears indicating successful setting. In the process of resetting IP, the computer will be cut down and then automatically reconnect as shown in the picture below:



4. After the prompt window indicating "printer address successfully set" appears, print self test page again to see if the IP address has been modified, as shown in the picture below:



How to configure IP address for Ethernet port printers

Three ways to configure printer IP address:

- Make configuration directly by test tools software in the CD driver within printer package.
- Make configuration by sending the command codes; (suitable for three ports printers)
- Make configuration by browsing the WEB; (suitable for three ports printers)

I. Make configuration directly by test tools software:

1. Printing Self-test to check the printer's own IP address (factory default IP: 192.168.123.100); self-test method: turn off the printer, then turn on the printer while holding down the FEED button, 2or 3 seconds later, release the FEED button and a page with the title "self test" will be printed out as shown by the picture below:



2. Confirm the printer IP address and then connect the printer to a computer through a hub, switch or cable directly (direct interconnection method). (Note: the IP address may not be modified if the connection is established through a router) Change the IP address by the test tool software in the CD, the software is as follows:

