



◆ Product Introduction: Intelligent Software & Safety Hardware

SE-PTS-100 portable X-ray scanner has clear image and compact and lightweight design. Using high-resolution plate imaging technology; integrated high-end dual energy, **line scan technology** and advanced digital display system.

Applicable to security inspection, criminal investigation, smuggling and factory product quality testing.

Security applications include police and military search, postblast investigation, forensics, customs and contraband detection, smuggling and factory product quality testing.

◆ Technical characteristics

- Three-dimensional imaging, accurate display of dangerous goods location and internal structure
- Dynamically capture images, support playback of dynamic video
- Scanning images are clear, the resolution is high and the imaging speed is fast. ;
- High capacity battery life, meet the field operations
- Super software features: easy to achieve multi-touch gestures, physical size measurement, continuous image zoom, multi-effect image processing
- Security upgrades: provides X-ray delay and safety protection to ensure operator safety
- Modular design, easy maintenance



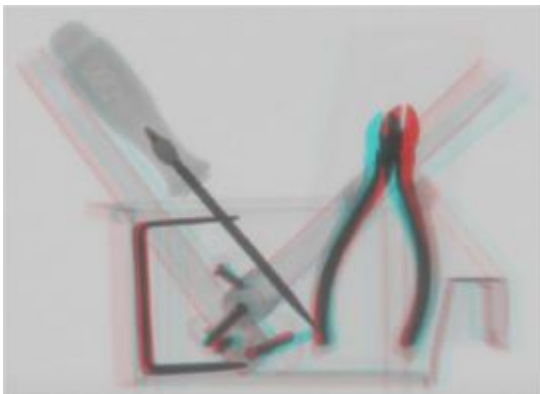
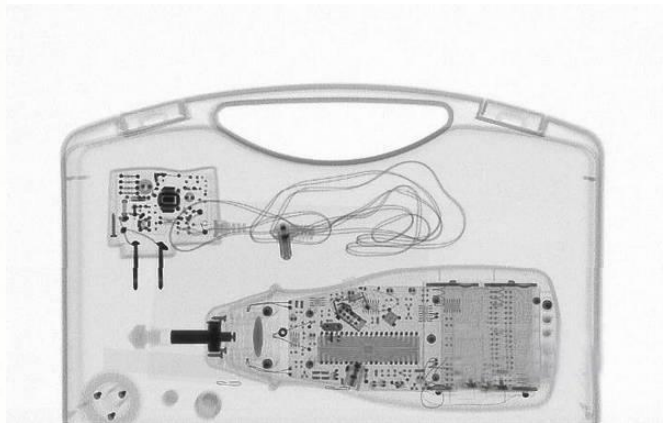
General Specification:

Wire resolution	42AWG (dia 0.064mm copper)
Penetration	30mm steel/140mm aluminum
Image control station	1920*1080 resolution, support multi-point touch, touch screen 14.0 inches; HD LED 1366 * 768 resolution; windows 10 operating system; intel core i5-6200U; 4GB memory; 500GB hard drive; NVIDIA Geforce 920M graphics card ,weight 2kg,
Sensor type	linear array
Image display	Color, Black/white
Effective imaging area	600*460mm
Image resolution	1536*1152 Pixels
Scanning way	Fast scanning within 6s; dual-energy scanning within 12s; 3D scanning image within 12s
data communication	Wired transmission (30m)
Image acquisition time	6s
Pixel size	0.4mm
Thickness of receiver	8cm
Spatial resolution	2.0 line pair/mm
X ray tube voltage	120kv
X ray source current	1mA
Grey level	65536
Image processing	Edge enhancement, super penetration, local enhancement, histogram equalization, color display, black and white display, pseudo-color display, relief display.
Area selection and enlargement	Unlimited continuous magnification
Storage capacity	At least 10000 images
Image Recall	100 images recallable, retrieval.
Image display	Support dynamic images
System function	Date / time display, historical image preview, user management, image storage and retrieval, emergency stop operation, device status display.
Material distinguish	Dual energy color image, organic /inorganic Stripping
Outline Dimensions	X ray generator: 482*215*178mm (L*W*H),
	Detection board : 770*531*84mm (L*W*H)
Total weight	22kgs
X Ray generator weight	10kgs
Detector board weight	10kgs
Operating temp.	-15°C~+50°C
Storage temp.	-40°C~+70°C
Battery	Rechargeable lithium ion battery(Supports 500 image captures)

Application :

Portable X-ray Inspection System is intended for a wide range of applications, for customs, law enforcement, police, airport and the others, including:

- mail inspection, handguns and explosives detection in left luggage and suspicious packets;
- detection of concealed eavesdropping devices (bugs) in furniture, building structures, office equipment, etc;
- non destructive inspection and evaluation.



3D sanning image (with 3D glasses)