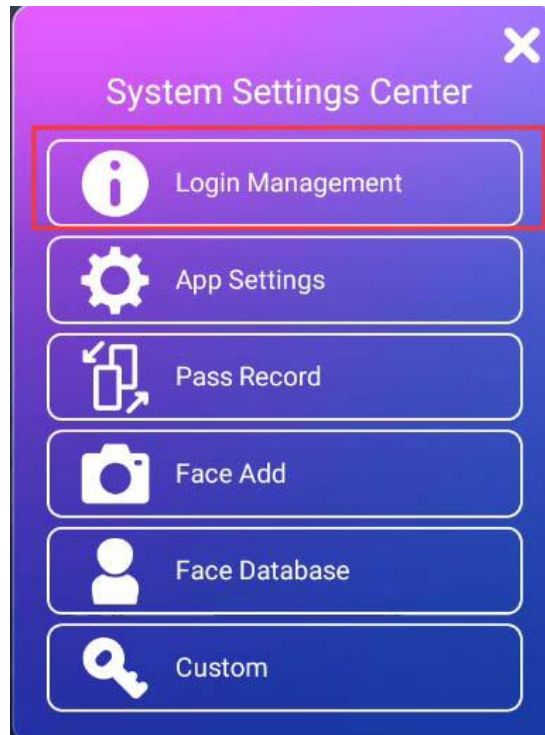
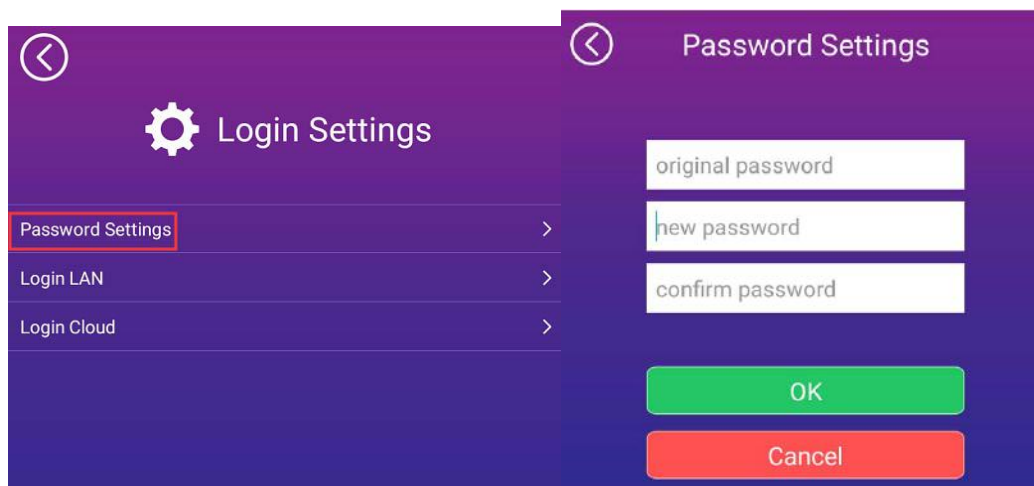


Click the **SETTING** button in the upper right corner to enter the login interface of the setting center. Enter the login password (the default password is 123456), and click the **OK** button to enter the setting center.

# 1、 Login Management

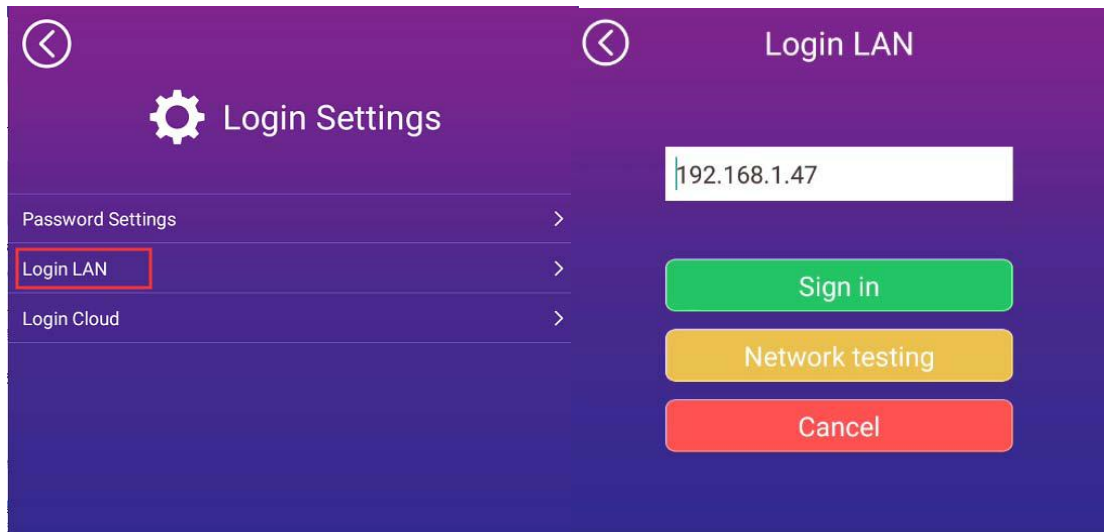


## 1.1 Password Setting



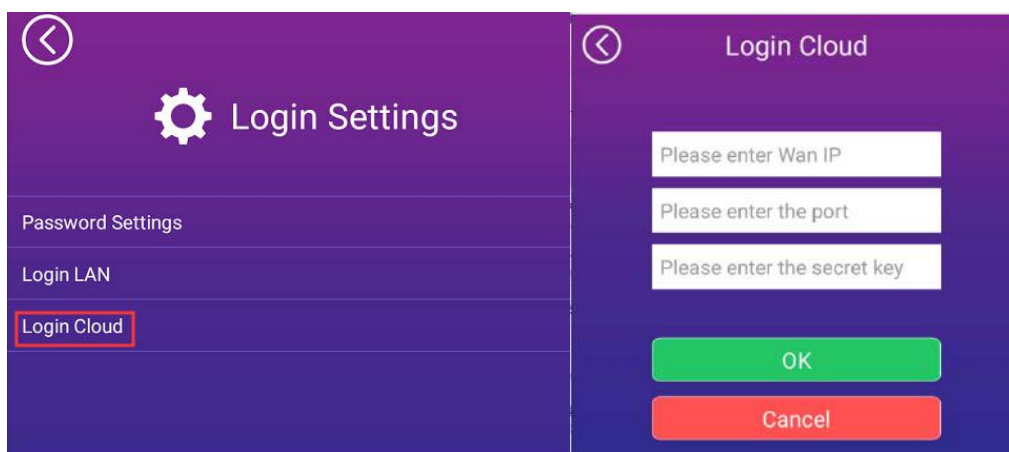
Enter password (default: 123456), new password and confirmation password, and click **OK** to save;

## 1.2. Login LAN



Enter the computer IP address installed in the web version of the software (the computer and device must be in the same LAN, and the IP address can be seen in the upper left corner of the PC end interface).

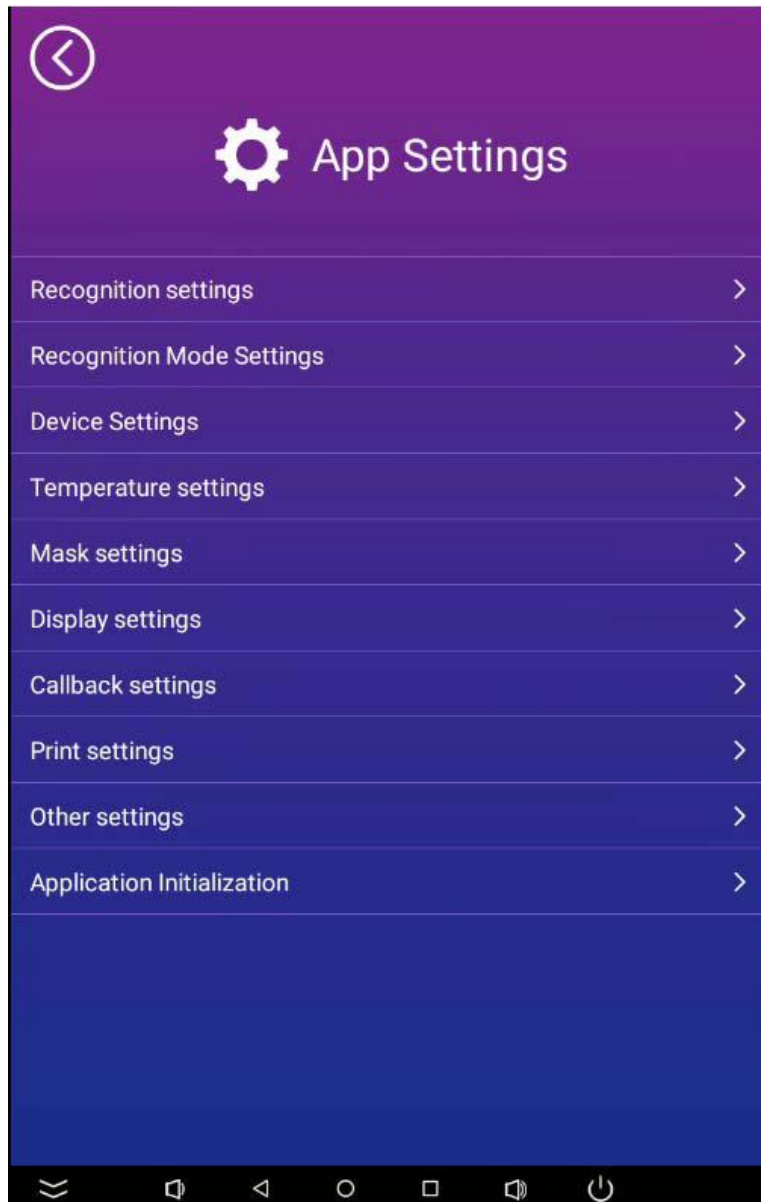
### 1.3. Login Cloud



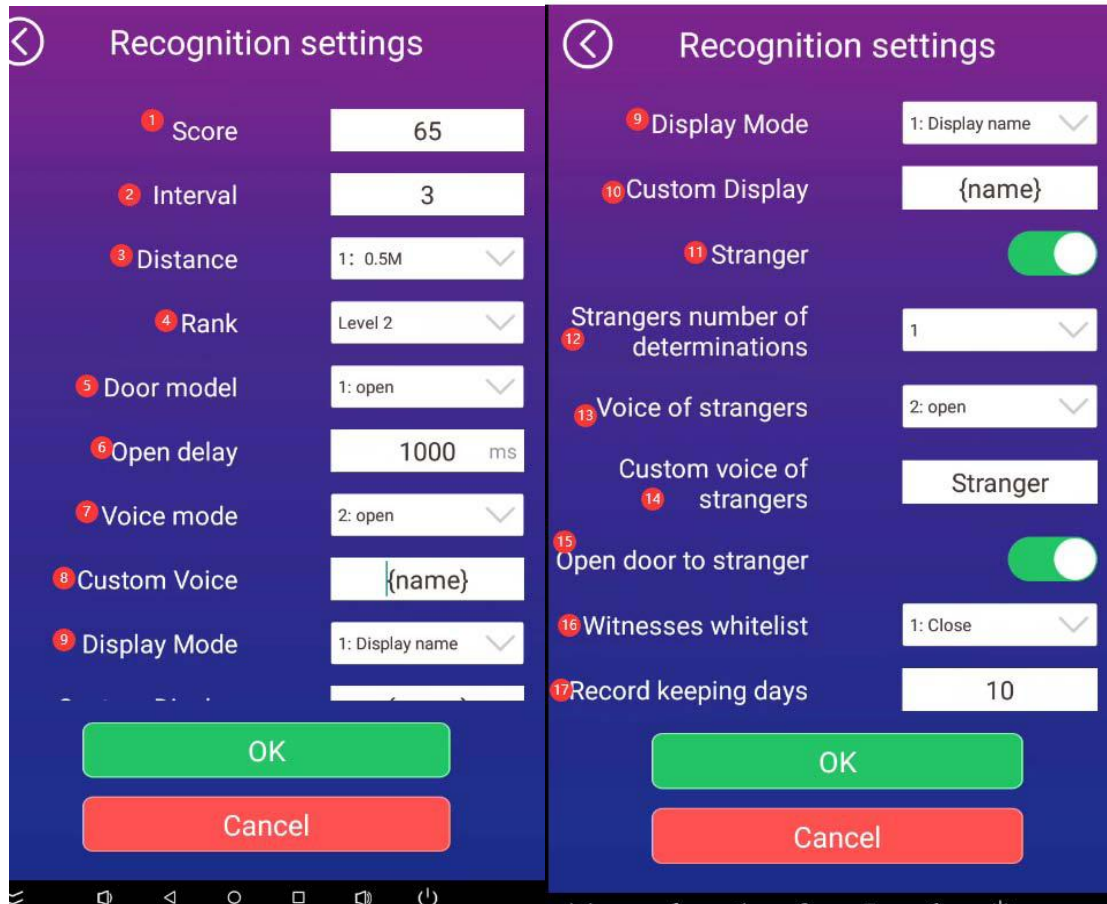
With the use of cloud software, input the IP address of the cloud server, the port number must be 10011, and the communication secret key is user-defined (the cloud server must be consistent with it).

## 2、 App Settings

## Parameters in App Settings



### 2.1 Recognition Settings



Parameter Description:

1 : Score: a score (0-100 can be set) for the comparison between the face and the base photo. The higher the score, the higher the accuracy.

2: Interval: the time interval for repeated recognition of the same face by the device (3 seconds by default, and 60 seconds at most)

3: Distance: the device detects and recognizes the face within the recognition distance, and the face beyond the recognition distance will not be detected (it is recommended to set 0.5m for temperature measuring equipment and 1.5m for non temperature measuring equipment)

4: Recognition Rank:

Level 1: do not turn on live recognition

Level 2: enable monocular live recognition (default)

Level 3: turn on binocular living recognition, and the maximum recognition distance is 1.5m

5: Door Model:

1: door opening signal, trigger relay door opening (default)

2: No output

3: Wiegand signal output personnel ID

4: Wiegand signal output ID card / IC card number

6 : Door opening delay: the duration of the switch signal output by the relay (the time interval from opening to closing). The default is 1000ms. The input value should be 500-25500 in MS.

7: Voice mode:

1: no voice broadcast

2: Broadcast name (default)

100: Custom (set in 8)

8: Custom voice, the format of {name} field is fixed, which represents the name placeholder. Other content is customized. Symbols are not allowed and the length is limited to 255 characters. Welcome to {name}.

9: Display mode:

1: display name

100: Custom

10: Custom display: the {name} field format is fixed, which represents the name placeholder. Other content is user-defined. Symbols are not allowed and the length is limited to 255 characters. Eg: Welcome to {name}.

11: Stranger: if it is off, it will not recognize unregistered personnel, and it will be turned on by default.

12: Strangers numbers of determination: the number of times the device recognizes a face as a stranger. The default value is 1. With the increase of numerical value, the determination time increases and the accuracy is improved. Recommendation 2 or 3

13: Voice of strangers:

1: on (default)

2: Close

100: Custom (set in 14)

14: Custom voice of Strangers

15 Open door to stranger:

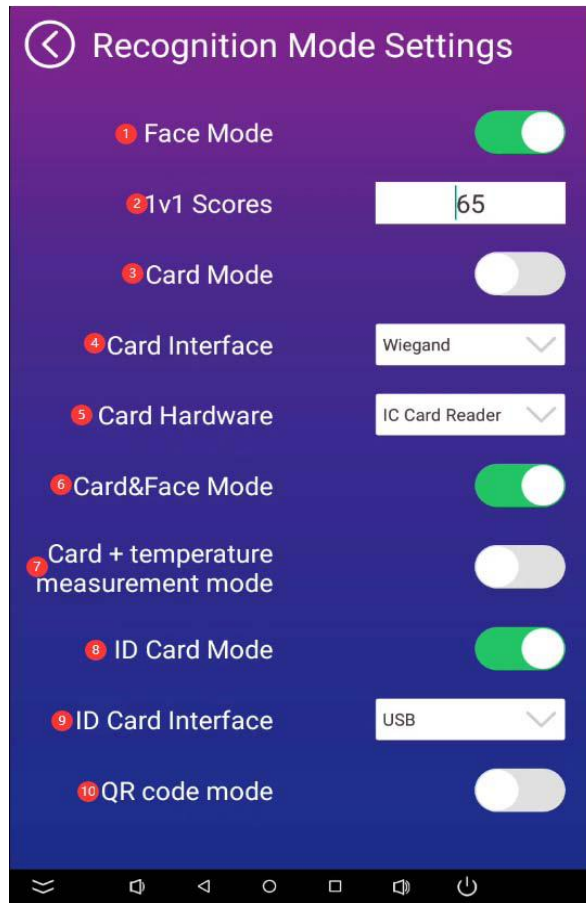
Open: all successful identification will open the door;

Close: unregistered identification will not open the door.

16: Witnesses Whitelist: it is used to verify the ID card of China and set the white list.

17: Record keeping days: 0 ~ 60. If 0 is set, records will not be saved

## **2.2 Recognition Mode Settings**



#### Parameter Description:

1: Face mode: on: can detect face; off: cannot detect face

2: 1v1 Scores: a score (0-100 can be set) for the comparison between the scene face and the base image. The higher the score, the higher the accuracy (65 is recommended)

3: Card mode: on: turn on single swipe card mode; off: turn off single swipe card mode (you can only choose one from card + face mode)

4: Card Interface: Optional wiegand 232 interface

5: Card Hardware: External card reader, QR code scanner, etc

6: Card + face mode: 1:1 comparison between card and face (dual authentication mode)

7: Card + temperature measurement mode: swipe the card first, then measure the temperature, and directly call back the card number data and temperature (the card number is not verified)

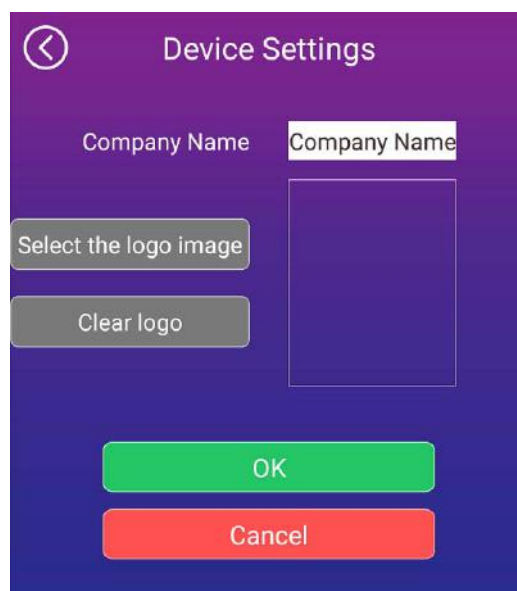
8: ID card mode: comparison between Chinese ID card and face

9: ID Card interface: temperature measurement equipment external ID card reader, select USB mode

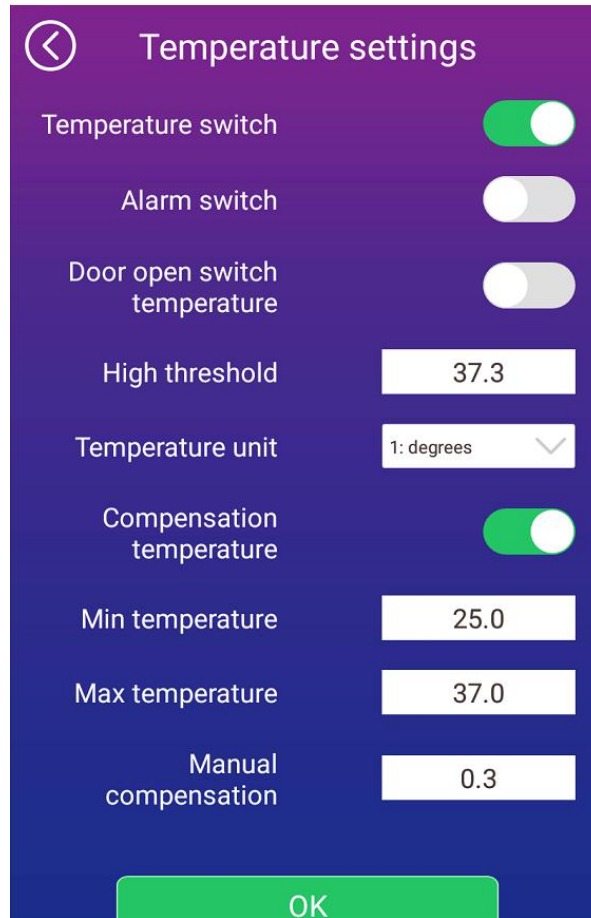
10: QR code mode: can scan the QR code first, then measure the temperature, and directly recall the QR code data and temperature (the QR code is not verified)

## 2.3 Device Settings

Set company name and Logo image



## 2.4 Temperature Settings



Parameter Description:

Temperature switch: Turn on or off the temperature measurement function

Alarm switch: Turn on or off the device high temperature alarm function.

Door open switch temperature:

On (both normal and abnormal temperature relays will open the door)

Off (open the door when the temperature is normal, and do not open the door when the temperature is abnormal)

High threshold: a value to judge the abnormal temperature (default 37.3)

Temperature unit: 1. Display centigrade (default); 2. Display Fahrenheit

Compensation Temperature switch: turn on or off the temperature compensation function

Min temperature: when the temperature is between the upper and lower limits,

APK automatically compensates to the normal temperature (range: 10 - 34.9)

Max temperature: when the temperature is between the upper and lower

limits, APK automatically compensates to the normal temperature (range: 35 -

44.9)

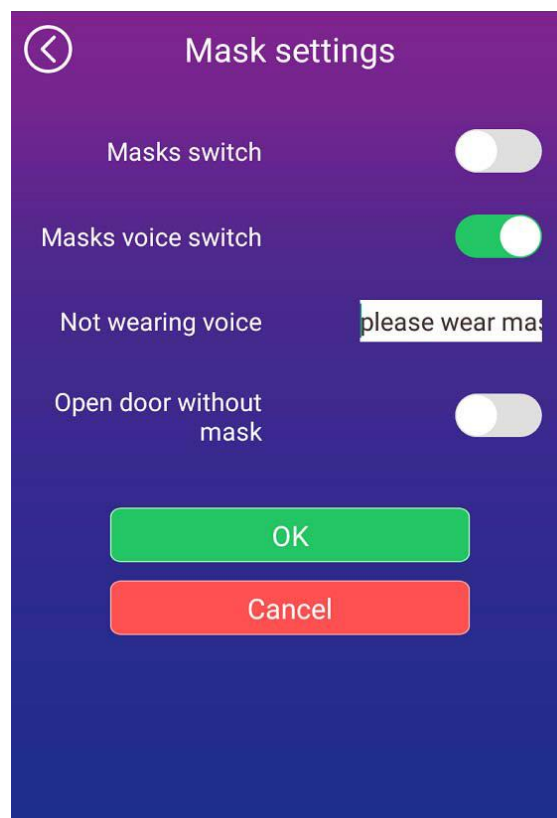
Manual compensation: manually compensate the temperature (can

compensate  $\pm 15^\circ$  and the temperature compensation switch must be turned

on, only show can be set in the user-defined parameters\_ cfg\_ temp\_ fix\_

Manual > true)

## 2.5 Mask Settings



2.4.1: Mask switch: On: personnel must wear masks (in basic settings, multi face detection needs to be set to detect the largest face); Off: personnel can be recognized without masks (default)

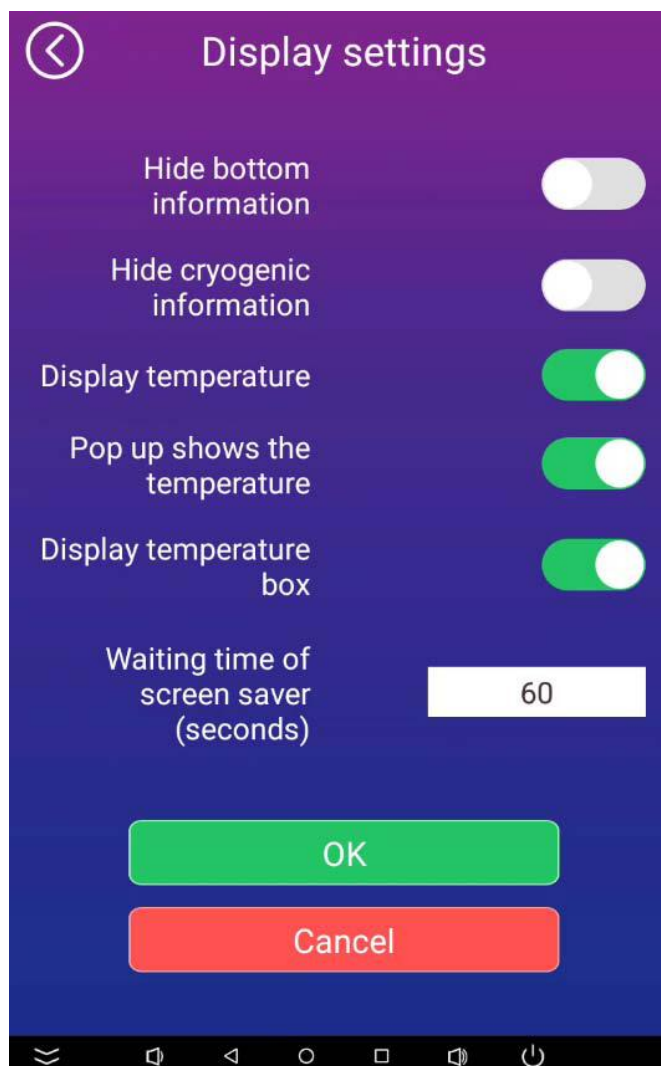
2.4.2: Masks voice switch:

On: when the switch is on and the person is not wearing a mask, the voice broadcast will prompt

Off: close the mask without voice

2.4.3: Not wearing voice: voice broadcast without mask

## 2.6 Display Settings



1: Hide bottom information

2: Hide cryogenic information

3: Show forehead temperature

4: Display pop-up window temperature

5: Display temperature measurement box

(the settings of 1, 2, 3, 4 and 5 are shown in the figure below)

6: Waiting time of screen saver (seconds): if you do not operate the device, you will enter the screen saver mode (or play ads) after a period of time. The default is 60 seconds, and the minimum setting is 10 seconds



## 2.7 Callback Setting

Callback settings

Callback include  
imgBase64

Close Stranger data  
upload

Identify Callback Url

Heartbeat Url

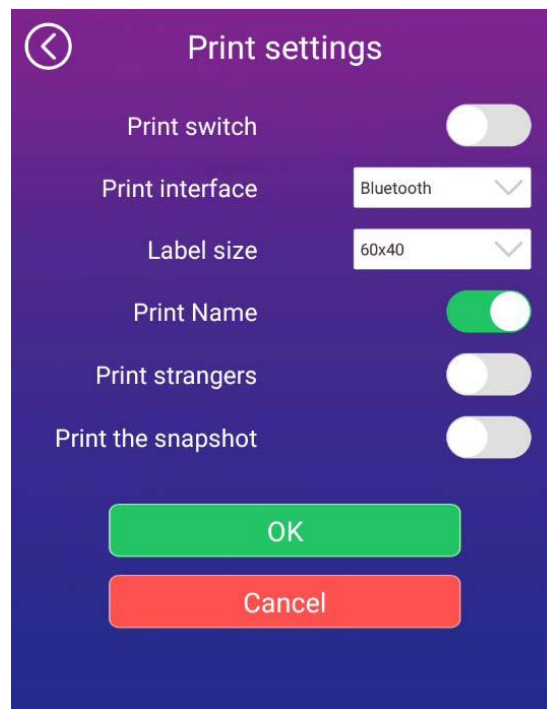
Registered address

OK

Cancel

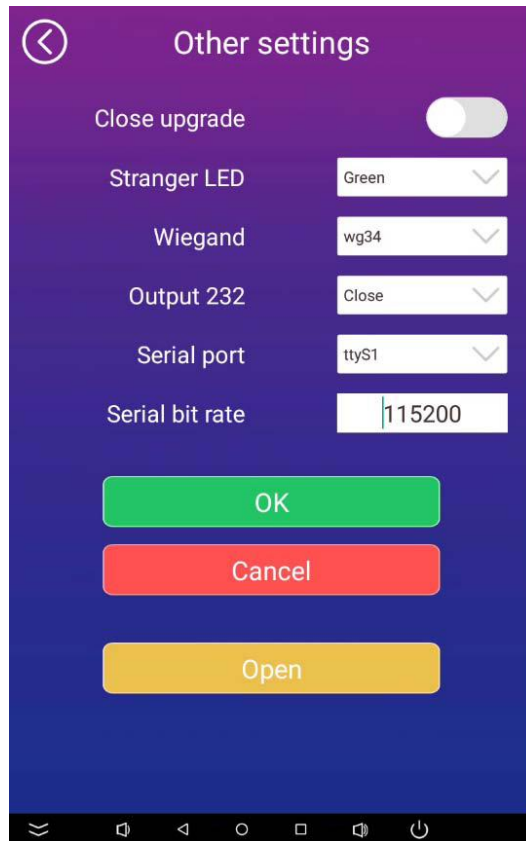
- 1: Callback include imgBase64 switch (control the picture reporting switch of identification record)
- 2: Close stranger data upload (if enabled, stranger data will not be reported)
- 3: Identify callback Url (fill in server IP)
- 4: Heartbeat Url (fill in server IP)
- 5: Registered callback IP

## 2.8 Print Setting



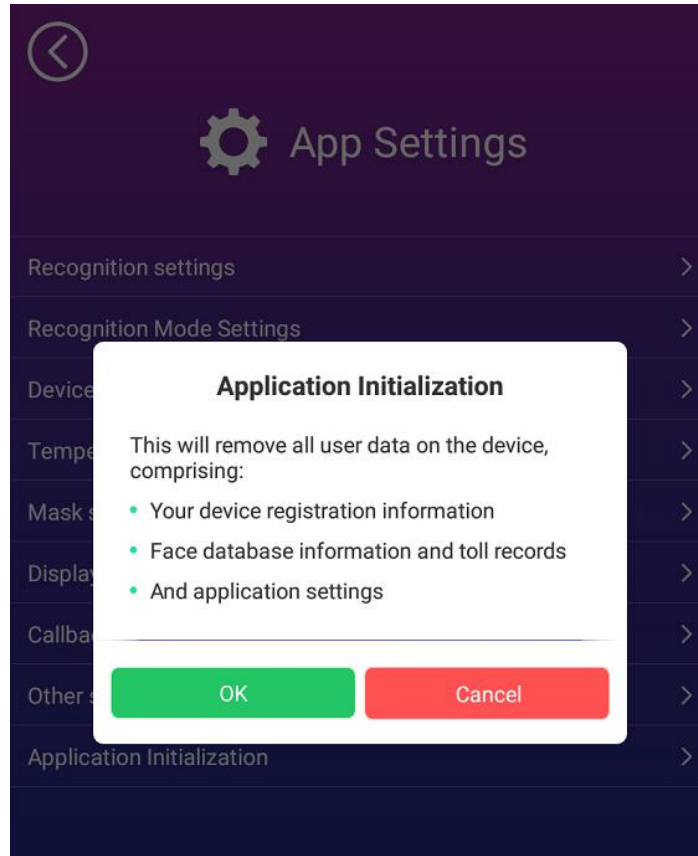
- 1: Print switch: can be connected with the matching printer if it is turned on.
- 2: Printer interface: Bluetooth (default), USB
- 3: Label size: Print paper size selection: 60 \* 40 (default size), 40 \* 30 (small size)
- 4: Print name switch: if off, the name will not be printed
- 5: Stranger print switch: when off, it will not print the information of recognized strangers.
- 6: Print the snapshot: after the switch is turned off, the on-site photos captured by identification will not be printed.

## 2.9 Other Settings



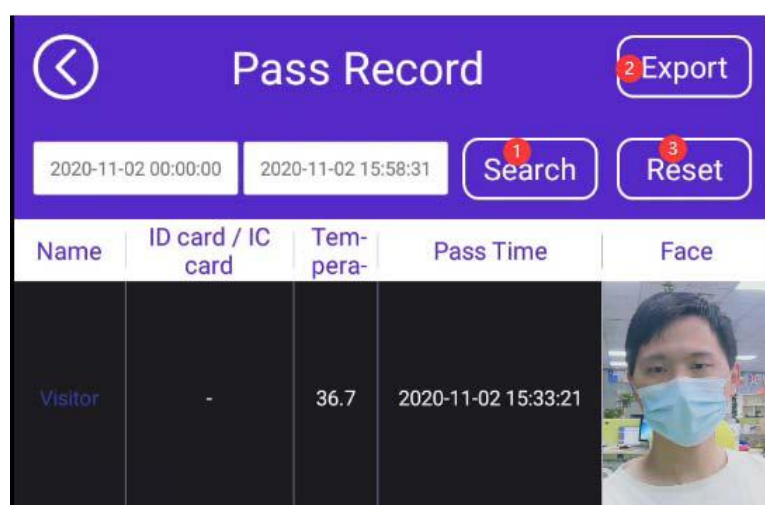
- 1: Close upgrade (APK cannot be pushed remotely after shutdown)
- 2: Stranger LED (red / green LED for successful stranger recognition)
- 3: Wiegand type: wg34: output 10 card number; WG26: output 8-bit card number
- 4: Output 232: opening can output personnel information and temperature through 232
- 5: Serial port number: select RS232 serial port number of the device  
Pay attention to distinguish different devices, FA external ttys1, Da external ttys4, built-in ttys1
- 6: Baud rate of serial port

## 2.10 Application Initialization



Reset all data in the device, including face data and related parameters

### 3、 Pass Record

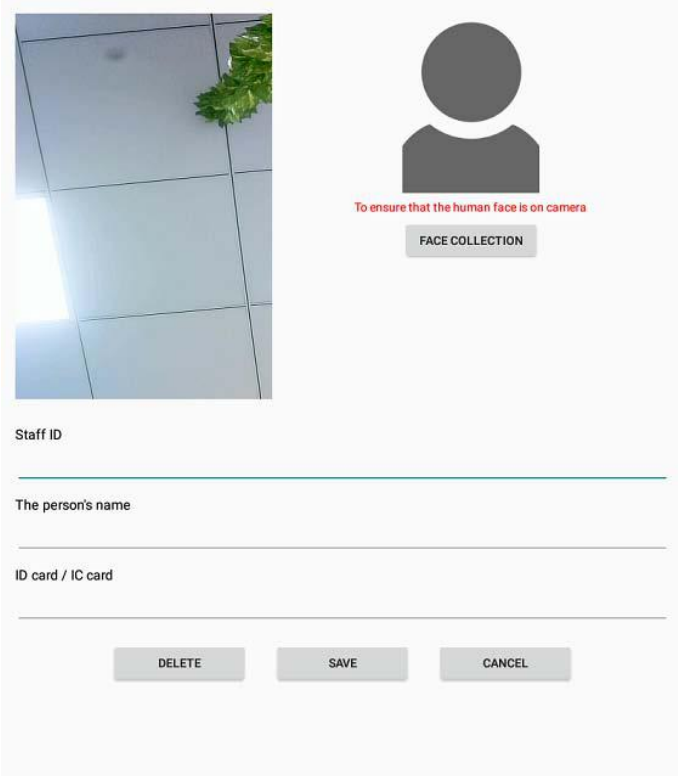


1: Search (access records by date)

2: Export (export identification records to the U disk root directory)

3: Reset (reset query conditions and clear records)

## 4、 Face Add



Staff ID

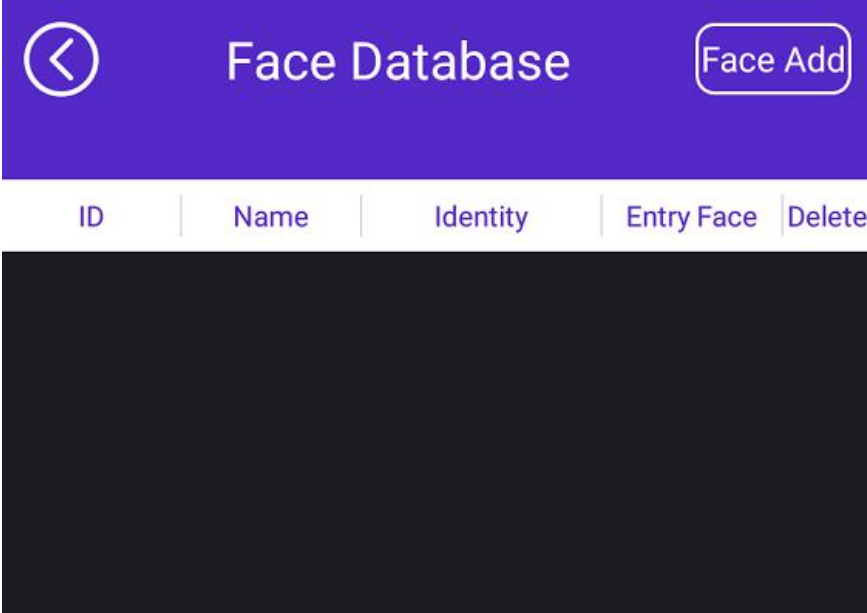
The person's name

ID card / IC card

DELETE SAVE CANCEL

## 5、 Face Database

Face information stored in the device



ID	Name	Identity	Entry Face	Delete
----	------	----------	------------	--------

## 6、Device Custom Parameter

Set custom function of device application

Device custom param

Key fixed\_min\_temperature Valu 25.0

Key fixed\_max\_temperature Valu 37.0

Key show\_temperature\_tip Valu true

Key temperature\_adjust Valu 0.3

Key fixed\_temperature Valu true

Key temperature\_unit Valu 0

Key hide\_device\_info Valu false

Key high\_temperature\_open Valu false

SAVE

CANCEL

Custom parameter description:

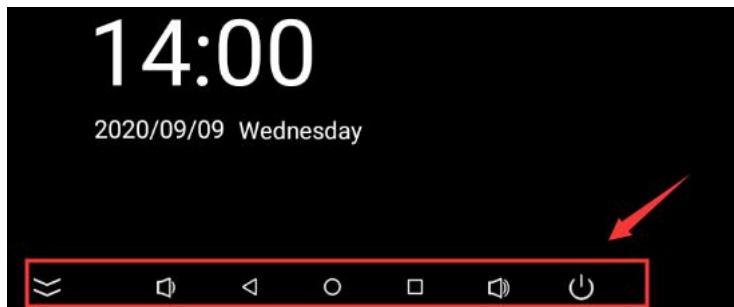
Key	Value	Description
high_temperature_open	true	Open the door at high temperature, not normally
img_base64_upload	false	Disable upload image Base64
stranger_open	false	Disable the stranger, open the door
un_mask_open	true	Open the door without a mask
record_save_days	0~60 ( 0 不保存记录 )	Set the storage days of identification record pictures
temperature_unit	2	Shows the temperature in Fahrenheit
high_temperature_alarm	true	Set high temperature alarm voice
ui	1   2	1: First set 2: second set
wg	26   34	Add WG26 configuration, default 34
out_232	ttyS1(串口号)	Customized RS232 output information
hide_device_info	true	Hide device information at the bottom
close_upgrade	true	Turn off upgrade configuration
fixed temperature	false	Whether to enable the temperature correction configuration, the default is on
fixed_min_temperature	(10 - 34.9)	Min temperature compensation, default 33
fixed_max_temperature	(35 - 44.9)	Max temperature compensation, default 35.7
close_stranger_upload	true	Turn off strange data reporting

show_temperature_tip	true   false	Forehead temperature displayed or not
stranger_led	red   green	Stranger temperature measurement success light color configuration
op_stranger_normal_up	false	Turn off the normal data reporting configuration of stranger temperature measurement
show_cfg_temp_fix_manual	true	Display setting center manual temperature compensation
show_detect_tip	false	Hide recognition prompt configuration
printer_open	true	Print switch
printer_stranger_open	true	Stranger print switch
printer_connect_type	1   2(Bluetooth usb)	Printer connection configuration, default 1, Bluetooth
stranger_photo_unsave	true	Don't save strangers photo configuration
printer_name_open	false	Print name or not

Note: some parameters is the same as some functions of APP setting center. It is recommended to set the parameters in the setting center first to avoid errors.

### 3、Appendix

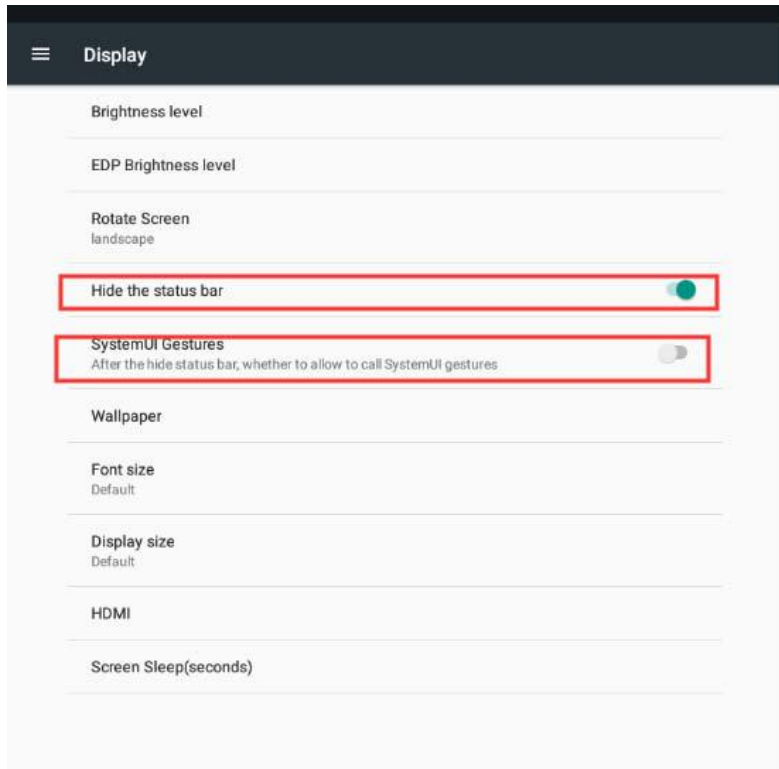
#### I : Hide navigation bar below screen



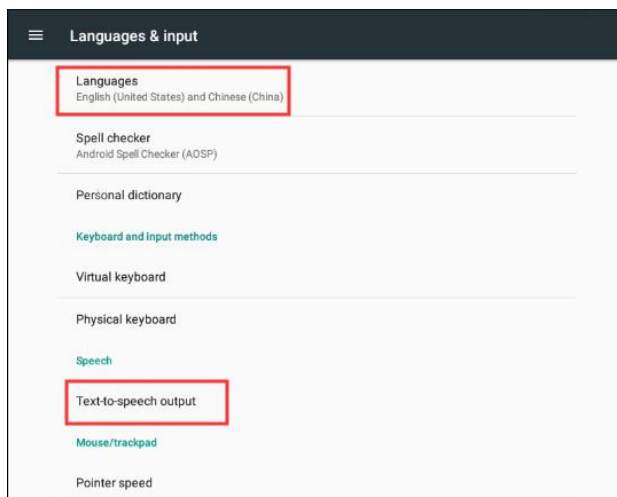
setting——>display ,

Turn on Hide the status bar

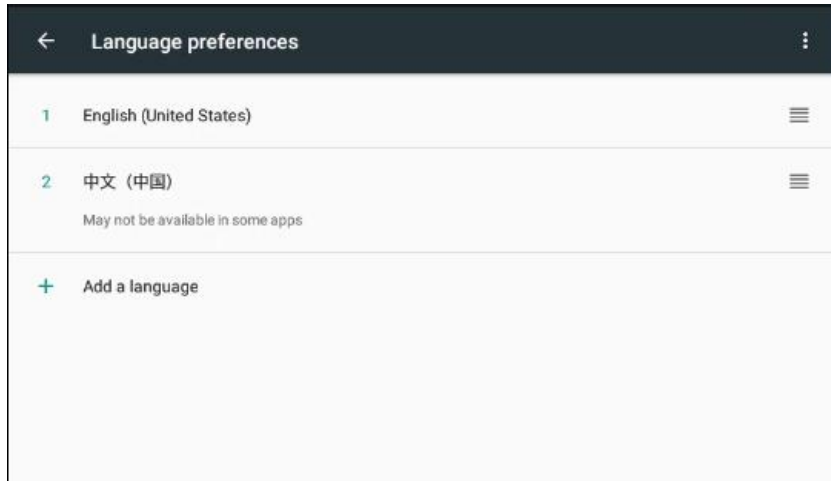
Turn off SystemUI Gestures



## II : Change app language and voice



**Change the language:** Settings > Languages & input, click languages, add and select the corresponding language. The APP language will follow the system settings.



**Change voice:** you need to use the Google text-to-peech tool (it is installed by default. If it is not installed, it needs to be manually installed). Settings > Languages & input, select text-to-speech put. Then click the settings icon next to Google TTS, select the corresponding language, and wait for the download and installation of voice files. After the installation is completed, return to the previous interface and click "listen to an example" . If the pronunciation is successful, the voice file is successfully installed. Restart the device, enter the app, fill in the customized broadcast content in the language of the corresponding country, set it, and then you can pronounce it.

